

The Clover Blast

July/August 2022

Throughout the 4-H year, we have grown our own 4-H community and family. There have been many opportunities like club work, projects like shooting sports and horse, and events like camp that have brought us all together. In the next few months, we get to show off what we have learned throughout the year. During fair, we get to learn from one another's challenges and to celebrate one another's accomplishments. Take this time to check in to see that deadlines are met and rules are known.

Fair Tips:

- * Sign up for more exhibits and know you can scratch. For example, if you are showing Photography, enter more and scratch the entries if you don't bring that many to fair.
- * Showmanship- If you are considering showmanship, please enter in it. You cannot add this on at fair!
- * For you livestock members, remember that tagging doesn't mean you are entered in fair. When you enter your market animals, you must have their RFID number as well.
- * Double check your entry and make sure you receive a receipt.
- * Check on Required Information: (ex. All indoor exhibits are required to have an index card with the four questions answered)
- * Remember that for interview judging, we have clubs posted at a certain time. Please come at your set time and be respectful of the judges time to eat lunch on the day of judging. If you have any conflicts or concerns, call Celeste!

Lastly, we expect both members and adults to conduct themselves with honesty and good sports-manship at all times. Kids- this is YOUR project, this is YOUR time to show off. Parents- Please take a step back and be proud of the work that THEY have done. Your kids may not win 1st, but THEY have completed something and THEY deserve your support in letting them exhibit THEIR projects. As members go through their 4-H career, they learn skills in which they will use for the rest of their lives. Now is the time to teach members about ethics, about right and wrong, about hard work and good sportsmanship. Yes, we do have rules in place that state, "Junior members must accompany, care for, and exhibit their own livestock at the Campbell County Fair." So please remember the purpose for this. We want to teach our youth life skills to help them become successful adults! Best of luck at this year's Fair!



INSIDE THIS ISSUE

| | |
|----------------------|-------|
| Member Info..... | 2-7 |
| Horse..... | 8 |
| Livestock | 9-11 |
| Shooting Sports..... | 11 |
| County Fair | 12-24 |

SPECIAL POINTS OF INTEREST

- Deadlines!!!!
- Livestock Events
- County Fair



July

- 11: Fair Entries & Horse Safety Certifications Due
- 7-10: State Shoot- Douglas
- 12-14: Cloverbud Camp
- 15: Shooting Sports Banquet
- 16: Horse Progress Show
- 20-27: Static Tag Pickup
- 29-Aug 7: Campbell County Fair

August

- 8: Mandatory State Fair Meeting
- 8: Western Junior Signup Meeting
- 16-20: Wyoming State Fair
- 22: Record Book/Portfolio Class

September

- 6: Record Books/Portfolios Due
- 10-11: 40th Celebration of Shooting Sports & Family Fun Day

October

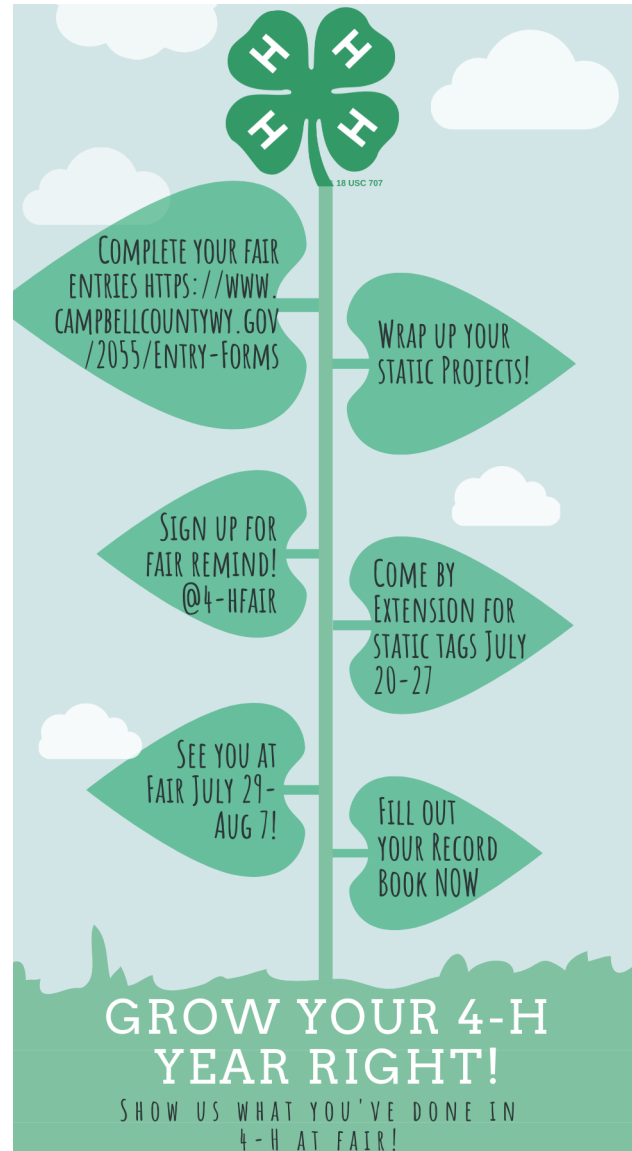
- 1: New Year Begins!
- 7: Achievement Night

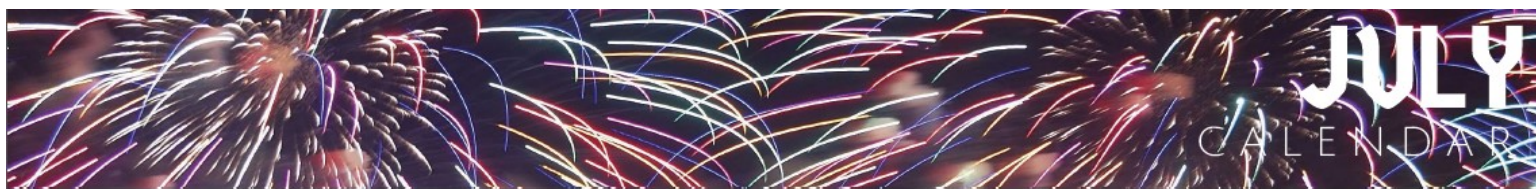
4-H GROWS HERE



Don't Miss the
DEADLINE!

**JULY 11TH
COUNTY FAIR
ENTRIES DUE
ONLINE BY 11:59 PM**





| Sunday | Monday | Tuesday | Wednesday | Thursday | Friday | Saturday |
|---|---|--|--|---|--|---|
| | | | | | 1 | 2 |
| 3 | 4 Office Closed | 5 Quilting Class Ponderosa Rm 1:00 pm Rabbit Practice Clover Corrals 4:00pm | 6 Crocheting Class Ponderosa Rm 3:00 pm Poultry Class GAMB 5:30pm | 7 | 8 | 9 |
| | | | | State Shoot  | | |
| 10 | 11 Fair Entry Deadline 11:59 pm | 12 Rabbit Practice Clover Corrals 4:00pm | 13 Poultry Class GAMB 5:30pm | 14 Photo Matting Ponderosa Rm 6:00pm | 15 Shooting Sprots Banquet College Tech Center 5:30pm | 16 Progress Show Kluz Arena 8:00am |
| | | Cloverbud Camp  | | | | |
| 17 | 18 | 19 | 20 Poultry Class GAMB 5:30pm | 21 | 22 | 23 |
| | | | Static Tag Pick Up Dog and Horse Packet  | | | |
| 24 | 25 Cat Vaccine Record Due to the Fair Office | 26 | 27 | 28 | 29 | 30 |
| 31 Pre-Fair Clip Clover Corrals 4:00pm | Static Tag Pick Up Dog and Horse Packet  | | | | Campbell County Fair | |



| Sunday | Monday | Tuesday | Wednesday | Thursday | Friday | Saturday |
|--|--|---------|-----------|----------|--------|----------|
| | 1 | 2 | 3 | 4 | 5 | 6 |
| Campbell County Fair | | | | | | |
| 7 Youth Livestock Sale | 8 Western Jr. Livestock Meeting Cottonwood Rm 4:30 State Fair Registration Cottonwood RM 5:30 | 9 | 10 | 11 | 12 | 13 |
| 14 | 15 | 16 | 17 | 18 | 19 | 20 |
| ← State Fair → | | | | | | |
| 21 | 22 Record Book Class Cottonwood Rm 4:00pm | 23 | 24 | 25 | 26 | 27 |
| 28 | 29 | 30 | 31 | | | |



ITEMS TO CHECKOUT! FOR FREE, A FEE, OR DEPOSIT!

- Two sets of clippers
- Horse Clippers
- Blower
- Scales for sheep/goat/swine
- Leathercraft items
- Sewing Machines
- Sergers
- Curriculum
- Cake Decorating items
- Leadership Totes
- Animal Curriculum Bags
- And More!

Photo Matting Class with Katie Ford - The Dos & Don'ts for Interview Judging.

When: July 14th, 2022 from 6 pm -7:30pm.

Where: Ponderosa Room

Please Bring: 2 photos to matte for fair. Only two photos per member (8x10 or 5x7, or one of each size). We supply the rest of materials needed.

YOU MUST RSVP 307-682-7281 BY JULY 9TH

QUILTING

Come Learn With Us!

Come learn how to make a quilted coaster or potholder with me! We will learn about what makes an item quilted, and how to quilt a project. We will discuss colors and patterns before we start our project.

Who: Anyone who is interested in learning about the process of quilting or wants to make a small quilted project for fair.

When: Wednesday July 5 from 1 pm - 3pm

Where: GAMB Ponderosa Room

How: RSVP at 307-682-7281 by June 30

DOG PRACTICES

@ 5:30-7:30PM
CLOVER CORRALS!

TUESDAYS

PLEASE FOLLOW
PROPER HEALTH
POLICIES

SHOWMANSHIP,
CONFORMATION,
OBEDIENCE,
RALLY, AGILITY!





PROJECT WEEK 2022- PARTICIPANTS THE FOLLOWING HAS FAIR ENTRY INFORMATION FOR YOUR PROJECTS!!

Leathercraft
Dept. H / Division 038



Barn Quilt - Visual Art
Dept. H/ Division 059



Animal 1st Aid - Vet Science
Dept. H / Division 058



Fly Tying - Sportfishing
Dept. H / Division 056



Flower Press - Visual Art
Dept. H/ Division 059



Modeling Clinic

JULY 15 TH, 2022

3:30PM- 4:30PM

GAMB COTTONWOOD ROOM

RSVP BY JULY 11TH @ NOON - 682-7281

Bring shoes you plan to wear and accessories like jackets for Style Review.

If you have any questions, contact Makala Riley@307-660-3125

Crazy Chain CROCHET Class

When- Wendsday July
6th, 12pm-3pm
Where- Ponderosa Room
GAMB
Who- Any 4-H Member
ages 8-18

Please RSVP by June
30th, you can RSVP by
calling (307)-682-7281





CLOVERBUD RECORD BOOKS

We are accepting Cloverbud record books! We ask that members write us a story about their 4-H year. If you came to Cloverbud classes and have not yet picked up your record book, come by the Extension Office, finish a story, and then turn it in! Contact Kim for more information!

Due September 6th!

August 22nd, 2022
4:00pm in the Cottonwood Room

*Record Book/
Portfolio
Class*

Portfolios are DUE on
September 6th



Horse

IMPORTANT

Things you need to know for Horse Entries at Fair!

- Horse ID's were due May 2nd. If you didn't ID the horse you won't be able to enter it in County Fair.
- Horses need to be safety certified and have paperwork on file before fair entry deadline (July 11th)!
 - You can check the most up to date list at <https://tinyurl.com/4mnnsbj>
 - Leaders who safety certify please let Kim know if you have any certifications that need turned in.
- Horse is two days this year! If you have conflicts please let JD and Connie know
 - Saturday, July 30th: (7am-9am) Check in and (10am) Showmanship, Halter, English, & Programmed Ride
 - Sunday, July 31st: (8am) Performance Classes followed by (not before 2pm) Timed Events
- Make sure to check your email as fair gets closer. Patterns and other notes will be sent out like usual.
- Horse packets **MUST** be picked up at the Extension office between July 20th and 27th.
- Sign up for the reminds! Text to 81010 Code for Fair is @4-hfair & Horse is @4-horse



**May 28, June
25, & July 16**

*Seniors @ 8am
Intermediates @ 10am
Juniors @ 12pm
Kluz Performance Horse Arena*

**HORSE
PROGRESS
SHOWS**

PLEASE Pre-register: <http://tiny.cc/22horseps>

MUST BE SAFETY CERTIFIED AND ENROLLED IN 4-H TO ENTER

**4-H HORSE PROJECT
TOP HAND**

TO QUALIFY:

SIMPLY PARTICIPATE!

Points will be added together from the first 3 progress shows and rodeos. Member with the highest overall points from these events will win! If multiple horses are ridden the best score in each class will count towards this award.



Livestock

LIVESTOCK COMMITTEE

Pre-Fair Clip

JULY 31 | 4-8PM | CLOVER CORRALS



It is important for you to clip your sheep THROUGHOUT the summer. There are clippers available to checkout and volunteers can come help you. This event is to help those that need the extra assistance. July 31 slots begin at 4pm-8pm. <http://tiny.cc/sheepclip22>

Showmanship Practice & Tattooing

July 5th & 12th
4pm-5pm
Clover Corrals

These two dates will include showmanship practice and a chance to Tattoo rabbits that need it.



GOTCHA AWARDS

The livestock committee will again be sponsoring these awards at fair! Get caught doing good and you will get tickets to put into our drawings. They will be awarded at the Livestock Sale Meeting!

IMPORTANT

Update for the Poultry Show at County Fair!

- At the June meeting the Fair Board decided to move forward with our Youth Poultry Show with precautionary adjustments to limit exposure. The Poultry Open Class Show is cancelled and Poultry will not be able to participate in the Round Robin competition for the 2022 Fair.
- Youth poultry will stay one night, checking in on Wednesday, August 3rd between 4pm-8pm, and exhibitors will be released after their showing is completed on Thursday, August 4th. All poultry sale animals will go home the day of the show and return the morning of the sale.
- We will send more information about check-in procedure, show information, etc as it is determined. Please contact the Poultry Superintendents or Fair Office with questions at 687-0200.

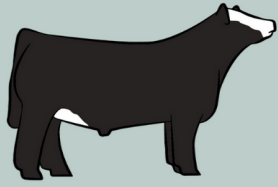


POULTRY

July 6th, 13th
and 20th
5:30pm at GAMB

No live animals at Poultry Class!
Please contact Judy or the
Extension office with questions.

Livestock



WHEN

Tuesday-Saturday
October 4-8, 2022

WHERE

800 San Francisco St.
Rapid City, SD 57701



WESTERN JR. LIVESTOCK SHOW

EST. 1937



MORE INFO

Info meeting August 8
at 4:30pm in the
Cottonwood Room OR
Contact Rick Johnson
at 307-660-7221



WHAT

Market & Breeding
Livestock Show &
Sale, Showmanship,
Livestock & FCS Skill-
A-Thons, Livestock, &
Produce Judging,
Meat ID, Table Setting
& Centerpiece
Making,
Presentations,
Scholarships,
And Much More



<http://www.westernjuniorlivestock.com/>



**August 16-20,
2022**

*4-H Animal Sign ups due to Kim BY the
Wyoming State Fair meeting, August 8th at
5:30pm in the Cottonwood Room of GAMB*

Explore The Fair

Animal Shows

Breeding & Market

Beef, Sheep, Goat, Dairy Goat, Swine, Horse,
Poultry, Rabbit, Dog, Cat, Llama/Alpaca

Competitions

Static Projects, Fashion Revue, Livestock
Judging, Beef and Sheep Fitting Teams,
Performance Lamb

Livestock

CAT PROJECT MEETING

JULY 6TH
FAIR SCALE BARN 1:30-3:00

(WE ARE CURRENTLY WORKING TO FIND A
DATE TO DO VET HEALTH CHECKS)

Bring your cat, its carrier, a harness, a litter
box, food, water, and grooming equipment

Call Marilyn Christensen for more
information 307-680-1295

Livestock Judging

At Campbell County Fair!

Thursday, August 4th at 4pm!

There will be a livestock judging contest at the fair! There
will be no pre-registration, just show up to participate.
Participants interested in judging at the Wyoming State Fair
need to participate or contact the coach!



Shooting Sports

Shooting Sports Event Dates 2022

- **State Shoot**
Douglas, Wyoming - July 7th-11th, 2022.
<http://www.uwyo.edu/4-h/opportunities/state-contests/state-shoot/index.html>
- **Shooting Sports Banquet -**
Friday, July 15th, 2022, at 5:30 pm. Carry-in dinner and awards at Gillette Tech Center-
RSVP and sign up for carry-in items at:
<https://www.signupgenius.com/go/805094BAAA72AA0FA7-shooting>
- **40th Year Celebration Banquet/Dinner -**
Saturday, September 10th, 2022, at Thunder Basin Highschool Commons
- **Family Fun Day -**
Sunday, September 11, 2022, at Bishop's Shooting Range





CAMPBELL COUNTY FAIR

INFORMATION

Fair Entries are all online this year

<https://campb.fairwire.com/>

Deadline July 11th @ 11:59 PM ~ NO EXCEPTIONS!

Instructions can be found at

<https://www.campbellcountywy.gov/2055/Entry-Forms>

Departments for entries!

H- Static Exhibits

J -Youth Livestock

SH - Showmanship

*Want to weigh your
hog, sheep, or goat?*

*The Extension Office has
scales. Check them out
for \$20/year!*

MANDATORY TAG PICK UP AND ATTACHMENT FOR 2022

ALL STATIC TAGS must be picked up at EXTENSION OFFICE

July 20th-July 27th - 9am to 4:45pm

The tags must be attached to items before interview judging,
Monday, August 1st, 2022. No Exceptions!!

**9 AM CROSSROADS, THUNDER BASIN, WESTERN PLAINS
HOOF BEATS, RIGHT ON TARGET**

**10 AM ADON COUNTRY KIDS, LITTLE POWDER, HIGH
PLAINS DRIFTERS, ROZET RANCHERS, ROZET
ROUNDUP, WILD HORSE, HIGH HOPES**

**11 AM BUCKLES & BOOTS, HORSE CREEK, ROZET
MUSTANGS, 4-H 101, RUSTY SPURS**

NOON LUNCH BREAK - NO JUDGING OCCURS

**1 PM 21 BUTTE, 21 DIVIDE, CATS N CRITTERS, SUNSHINE,
THE ROUNDERS, DOUBLE DIAMOND**

**2 PM CITY RANCHERS, BLUE RIBBON, CLOVER EXPRESS,
GREEN CLOVERS, TIMBERLINE RANGERS, WILD
WEST**

COUNTY FAIR INTERVIEW JUDGING SCHEDULE MONDAY, AUGUST 1ST

For Indoor Exhibits, WYC- Spirit Hall, Cam-Plex



CAMPBELL COUNTY FAIR

INFORMATION

**IMPORTANT --- PLEASE NOTE **

It is the responsibility of the 4-H exhibitor to transport all animals, fragile or breakable exhibits, and all oversized exhibits to the State Fair. The Campbell County Fair Board & Campbell County Extension personnel are not liable for loss, damage, or accident of any State Fair exhibits. The exhibitor accepts all responsibility for State Fair articles.



STATE FAIR

All individuals attending the Wyoming State Fair for **animals** must attend the Mandatory State Fair Meeting. The meeting will be held **August 8th @ 5:30 in the Cottonwood Room**. All State Fair livestock entries will be taken at this meeting.

Please contact Kim PRIOR to this meeting if you have a conflict.

NO LATE ENTRIES WILL BE TAKEN!!

Go to www.wystatefair.com for the Premiums Book



ALL STATIC EXHIBITS

Must have a 3" X 5" card attached with answers to the following questions:



- a. What did you like best about your project?
- b. What did you learn in the process, tools used, skills learned?
- c. How long did it take to complete your project?
- d. What were your goals for this project, any additional help from others, etc?



CAMPBELL COUNTY FAIR

INFORMATION

4-H APPROVED DRESS CODE FOR YOUTH LIVESTOCK AND STATIC INTERVIEWS

Long sleeved, white shirt with collar, black pants (black jeans or dress pants); optional navy blue or black blazer may be worn, and appropriate and clean footwear. Dark Brown or Black boots (no colored boots) and/or Brown or Black leather closed-toe shoes (no colored or leather tennis shoes) are required for show and sale. No tennis shoes or sandals. Caps are not to be worn in the show/sale ring.

Horse Requirements: Western attire is required, including hats, helmets, and dark colored boots. No colored boots are allowed. Spurs and chaps are optional.

Cat and Dog Requirements: Appropriate attire to compliment the animal. Cat Showman must wear Long-Sleeved shirts.

Dairy Cattle & Goat Requirements: Long sleeved white shirt, white pants and brown or black leather shoes (no leather tennis shoes). For safety purposes, boots are preferred.

Interview Judging: Appropriate business casual attire for example: a long or short sleeve button-up collar shirt or polo, pants, footwear with closed toe shoes.



YOUTH LIVESTOCK

Have you done your Fair Entries yet? Here's some important tips!
<http://campb.fairwire.com>



Department H is where you will enter your static exhibits! DO NOT enter your live animals here.

Department J is for Youth Livestock. This is where you enter your LIVE animals.

Don't forget about showmanship! Showmanship is department SH. Showmanship is the exhibitor and how they show. If you believe you want to participate in Showmanship sign up now!

We can always scratch you from an entry, but we **CANNOT** add you after the **July 11th** deadline!



****CAMPING AT FAIR****

1. **FEE:** A fee of \$100 will be charged for each camper space during the Campbell County Fair. Spaces can be rented through the Campbell County Fair Office.
2. **SPACE:** All campers must keep their space litter free and in a sanitary condition. Rowdiness, profanity or vandalism will not be tolerated. The Fair Board reserves the right to dismiss any offender for reasons satisfactory to itself, without refund. Parents/legal guardians are responsible for their children at all times. All exhibitors camping during Fair **MUST** have a parent/guardian in the camper to supervise kids during the evening hours of Fair and overnight. Guardians must be of legal age. See Dog Rules on page 12.
3. **QUIET HOURS:** There will be no congregating in any part of the campground past 11:30 pm Sunday through Thursday and 12:00 pm midnight on Friday and Saturday. All kids must be in their campers with the radios and TV's turned down. Parents/guardians must be in the camper at this time.
4. **CAMPER REGISTRATION:** Camping is only allowed in Fair Board designated areas and must be registered through the Fair Office. Violators will be towed at owner's expense. Reservations for campground can be made after January 1st of the current year by calling the Fair Office at 307-687-0200. Prior to parking camper, please check in with the Campground Superintendent or the Fair Office. Payment is due at the time of parking. Once payment is received the Campground Superintendent or Fair Office will issue a camping permit that has the contact information and phone number. The camping permit must be posted on the outside of the camper and be easily readable for emergency contact.



****GENERAL POLICIES****

- **Barn Times:** Open 5:00 am Closed/Locked 9 pm Daily.
- **Tie- in Time** 6-9 am. **Tie-Out Time** 6-8PM All animals **MUST** be fed, watered and cared for by 9AM in the morning and 8PM in the evening.
- **Youth Animal Care** Youth members must accompany, care for and exhibit their own livestock at the Campbell County Fair. Fitting is to be done by 4-H or FFA members **ONLY**. Youth members are expected to accompany, care for, feed, water, groom/ fit, and exhibit their own livestock at the Campbell County Fair. Each Youth member having livestock for show is required to keep his/her alley clean and stalls orderly at all times. However, in the interest of safety and education, a Youth member may be assisted by another active 4-H or FFA member. Assistance is defined as a learning situation, where the person doing the assisting is teaching the youth member a technique in fitting or showing. This 4-H/FFA member is allowed only to educate the youth member the proper skill or techniques, and the youth member is expected to perform the majority of each technique/skill required. Youth member must be involved by actively watching and listening to the person assisting them. Any youth using electronic devices (ex: Cell Phone, etc.) that serve as a distraction during this time will be issued a warning to get involved.
Adults/parents/guardians/leaders will be permitted to help/ assist any 4H or FFA member when it becomes a safety concern while the livestock are on the grounds. No adult/parent/guardian will be permitted to help any 4-H or FFA member fit, block, or show their livestock projects while the livestock are on the grounds. Violations of this policy must be reported to the Superintendent in a timely manner. The Superintendent and/or Fair Coordinator and/or Fair Board will investigate and address the report. If an Exhibitor is found to be in violation of the animal care/fitting policy, he/she may be disqualified from competition, forfeit any premiums/fees/awards already received, and be immediately dismissed from the fairgrounds.
- All non-sale animals released between 7pm 10pm Saturday August 6th and Sunday August 7th 5 am-7 am
- All feed must be stored outside of the building.



****VISUAL ARTS and PHOTOGRAPHY****

Hanging Exhibits: Posters, pictures, artwork and photography exhibits should come with a method for hanging. They will be displayed on hooks that will be hung on peg boards. If the item cannot be hung, they will be displayed on the floor or table. Display Boards and posters must be able to stand on their "own" on a table or floor. The Campbell County Fair Board is not responsible for breakage due to inadequate display method.

No breakable glass allowed/use of plexiglass or shrink wrap is allowed. Failure to exhibit items in an appropriate manner will be disqualified. Example: must follow the 4-H Photography & Visual Arts display guidelines brochure found at the Extension Office or <https://tinyurl.com/duhs5j5x>.

Display Materials: 1. Foam Board - Mounted securely on a stiff foam board. 2. Matting - Picture mounted securely to frame and board on back. 3. Frame - Not suggested. If you choose to use a frame, light weight is preferred.

Hanging Options: 1. Punched Holes - Hanging hole at top center. It should be 1/2" down from the board's top and about 1/2" in diameter. 2. Wire or String - Firmly attached to the top two corners with wire strung from one side to the other. Do Not tape to the corners. 3. Hook - Small Wire command hooks at top center. DO NOT USE: Weak string, yarn, pipe cleaners, pop top tabs, coat hangers or tape!



****Fabric and Fashion****

All Fabric and Fashion items will be judged on Friday July 29th

Style Show will be Sunday July 31st

Every Fabric and Fashion item must have an identification label SEWN into the garment. Labels are available at the Extension Office. Do not pin the labels in the garment.

All garments considered for wool awards must be labeled "Wool" by a tag sewn into the garment.



REMINDER

****Warning System at Fair ****

EXHIBIT/LIVESTOCK AREAS: The Campbell County Fair Board will utilize the Warning system in Exhibit/Livestock areas. The Warning system will work as follows for not following animal care rules (feeding/watering/tie in and tie out times) or exhibiting cleanliness.

The warning system will consist of a three-step process. Superintendents are deemed authority given by the Campbell County Fair Board to issue warnings as follows:

Yellow Card: If there is a violation of proper animal husbandry ethics, a yellow card will be attached to the stall/cage/exhibit area. The yellow card means attention needs to be given to either feed and water, or cleanliness of stall/cage, alley or tack areas.

Orange Card: If a second warning is to be given for not taking care of the issue or found in violation a second warning, Orange Card, will be attached to the stall/cage/exhibit area.

Red Card: When a Red Card is deemed necessary, a Campbell County Fair Board member and the Department Superintendent will ask the exhibitor to remove their animal(s)/exhibit from the grounds. Receiving a Red Card will result in forfeiture of premiums and Youth Livestock Sale privileges.



Sheep and Goats

Scrapies Tag: All exhibition sheep and goats must be tagged with a USDA/APHIS scrapies tag/ID. Those without scrapies identification will not be allowed on the Fairgrounds

Weigh Ins: All lambs must have been totally slick shorn within 5 days of weigh in.

Market goats must be uniformly slick shorn with 3/8 inch of hair or less at the time of weigh-in. Legs may have hair up to the hock and knee only.



Drenching Rule

Oral drenching using drench guns is allowed. The use of stomach pumps, drench tubes, or any other esophageal method is prohibited.



CAMPBELL COUNTY FAIR

INFORMATION

Exhibition & Show Swine Import Requirements

As a reminder, it is a state of Wyoming and a Federal (USDA-APHIS) rule that all swine entering the state must be officially identified, must have a certificate of veterinary health inspection and a WLSB entry permit before coming into Wyoming. Compliance with these rules is mandatory for all importers of swine, and violations will be addressed. WLSB import requirements can be found on the WLSB website at <http://soswy.state.wy.us/Rules/RULES/8634.pdf>.

All swine must have a certificate of veterinary inspection, issued in the previous thirty (30) days, showing a permit obtained from the Wyoming Livestock Board, within the previous ten (10) days. All swine imported will be placed under quarantine on the farm of destination for a Pseudorabies re-test to be completed within thirty (30) to sixty (60) days after import.

Wyoming will not accept swine that have moved through more than one market in the last thirty (30) days prior to arrival in Wyoming.

All swine must be individually identified with ear tags, breed association-approved ear notches to tattoos are acceptable identification for purebred breeding swine.

Brucellosis: Swine for exhibition purposes entering Wyoming must originate directly from a validated Brucellosis-free herd or state, or if over 3 months of age, be negative to the Brucellosis card test within thirty (30) days prior to date of entry (test must be by state -- federal approved laboratory).

Pseudorabies: Swine for exhibition purposes must originate from a Qualified Pseudorabies Negative Herd or Stage 5 or 4 state and further, must be transported directly from the Qualified Pseudorabies premise or Stage 5 or 4 with no stops, drop-offs, pick-ups, at any site that is not a Qualified Pseudorabies Negative premises and will be quarantined on arrival for Pseudorabies re-test thirty (30) to sixty (60) days from date of entry.

Swine not originating from a qualified Pseudorabies negative herd stage 4 or 5 state, must be tested for Pseudorabies within thirty (30) days prior to entry and will enter Wyoming under quarantine and isolation from all other swine for re-test no sooner than thirty (30) days and no longer than sixty (60) days from date of entry.

NOTE: All swine brought into the state for purpose of resale for 4H and FFA projects will be quarantined to the person holding the sale, or the Wyoming individual importing the animals. It is the responsibility of the sale management or the importer to notify this office with complete names and addresses of all buyers and the swine's destination. This information will also include the individual identification of the swine received. After this office receives the above information and after all swine are accounted for, the notice of quarantine will be lifted from sale management or the original importer. New quarantines will be issued to the new buyers.

If you purchased your swine from out of state please bring your paper to Fair check-ins with you.

CAMPBELL COUNTY FAIR

INFORMATION

Campbell County Fair - ShoWorks Entry Process



1. To enter exhibits in the Campbell County Fair go to <https://www.ccgov.net/1536/Youth-Information-Page> or

<https://wyoextension.org/campbellcounty/4h-youth-development/forms-and-registrations/fair-info/> and click on the Enter Here.

2. Select the Sign In icon on the upper right hand side of the screen. The second one, on the Youth Livestock Sale, Campbell County Fair page. ****Not the one at the ccgov.net site.****



3. Once you have selected Sign In, select "Choose a Type" from the dropdown menu. This allows you to select the type of exhibitor.

I am a...

Choose a type...
 Exhibitor
 Quick Group
 Administrator

4. Select "Exhibitor" for an individual.

5. Proceed to fill out the LEGAL first, and last name of the person entering an exhibit.

1 Register 2 Entries 3 Review 4 Confirm 5 Finish

Registration

Login:

Please log in as an Exhibitor or create a new account.

First Name: John R.

Last Name: DOE

☒ I am a new exhibitor or have yet to register this year

☐ I have previously registered this year

Register

6. Select "I am a new exhibitor." Even if you have participated in fair in previous years you must enter each year as a new exhibitor.

CAMPBELL COUNTY FAIR

INFORMATION

If you would like to enter an entire family or group, select Quick Group and that will allow you to do all the entries for your family under one account.

Group

New Group:
Here you can set any defaults for this group.

Group User Name: Heald Family

Password: ****

Re-type Password: ****

e-mail (optional): healdbj@gmail.com

Default Club (optional): Young Leaders

Continue

Type in group user name. Choose a password, retype the password. Put in a valid email so that your receipt will be sent to you. And select the club to start with (You can do 4-H and FFA entries under Quick Group, just make sure for each individual exhibit you have the right club selected.)

Registration

Registration Information:
Complete the following registration and click the **Continue** button at the bottom.

First Name: John E.

Last Name: Doe

Password: *

Re-type Password: *

Pay premiums to: *

Address: *

Address2: *

City: *

State/Prov: *

Postal Code: *

Phone Number: *

e-mail: *

Re-type e-mail: *

Age: *

Date of Birth: *

Continue

7. Create a password. You may log-in numerous times by using your first name, last name, and password. **Do Not forget your password!**

8. Complete form. All fields with asterisk are required to move on.

9. Select continue once all the fields are filled out.

10. Registration Confirmation, make sure the information is correct and select "Continue"

11. To make an entry, choose the department in which you want to exhibit.

Choose a Department --

- All Departments
- 4-H Department (H)
- Country Shoot (CS)
- FFA
- Open Class Art (A)
- Open Class Barn Quilt (BQ)
- Open Class Boy Scouts (B)
- Open Class Ceramics C
- Open Class Crafts (D)
- Open Class Dog Show E
- Open Class Farm Products (G)
- Open Class Floriculture (F)
- Open Class Foods (K)
- Open Class Furniture Refinishing (L)
- Open Class Garden Products (M)
- Open Class Girl Scouts (N)
- Open Class Health Foods (KH)
- Open Class Market Wool Show (P)
- Open Class Needle and Fancy Work (Q)
- Open Class Non-Clothing Wool Contest R
- Open Class Photography (S)
- Open Class Poultry (T)
- Open Class Rabbit Show (U)
- Open Class Sheep Lead (V)
- Shoemanship
- Youth Livestock (J)

12. Choose a division you are entering from the dropdown list.

Department: Youth Livestock (J)

Division: -- Choose a Division --

- J-001 Youth Breeding Beef
- J-002 Youth Market Beef
- J-003 Youth Hereford Steer Show
- J-004 Supreme Cow Contest
- J-005 Youth Dairy Goats
- J-006 Youth Breeding Meat/Market Goat
- J-007 Youth Halter Horse
- J-008 Youth Horse Performance
- J-009 Youth Poultry Show
- J-011 Youth Rabbit
- J-012 Youth Breeding Sheep
- J-013 Youth Market Lamb - Blackface
- J-014 Youth Market Lamb - Whiteface
- J-015 Youth Market Lamb - Speckled Face Only
- J-018 Youth Breeding Swine
- J-019 Youth Market Swine
- J-020 Youth Wool Show
- J-031 Youth Dairy Cattle

CAMPBELL COUNTY FAIR

INFORMATION

13. Choose the class you are entering from the dropdown list.

14. Choose the club you are entering for. You will have to do this for each entry.

Department: Youth Livestock (J)
 Division: J-019 Youth Market Swine
 Class: 001 : Market Swine
 Tag ID:
 Description:
 Club: Horseheads

15. If you are exhibiting in both FFA and 4H you can enter both under the same profile. Enter each animal and select the club below for FFA or 4-H. If you enter both in 4-H they will both show as 4-H animals.

16. If exhibiting a market animal, you will need to enter the Tag ID# for each entry.

17. After selecting the department, division, and class, select “Add Entry to Cart”

Register Entries Review Confirm Finish

Entries

✓ One entry added
 One 'J-019 Junior Market Swine' entry has been added to your cart. You may continue to the next section of this time or select another Division to add more entries to your cart.

Department: Choose a Department

+ add different entry + add similar entry Continue

“Add a different entry” will take you back to choose your department.

“Add similar entry” will take you to enter in additional classes under the same Department and Division you just entered in.

Remember if you are wanting to exhibit multiples in the same class, you must enter them in the class multiple times. Ex. If you plan to show 5 photos, you must enter 5 times.

Register Entries Review Confirm Finish

Review of Cart

Continue to Check-out
 The following is a list of items in your cart. To remove an item, click the X button next to the item that you want to remove. To edit an item, click the edit button.

⚠ You are not finished yet! You will still need to confirm in the upcoming steps.

| Item | Description | Amount | Edit | Remove |
|---|--|---------------|------|--------|
| John R. Doe's Items: | | | | |
| J-019 Junior Market Swine | Class: 001 - Market Swine Tag ID: 1 Club: 21 Butte | \$0.00 | | X |
| Total for John R. Doe with 1 entries | | \$0.00 | | |
| 1 TOTAL ITEMS IN CART: | | \$0.00 | | |
| PAYMENTS: | | \$0.00 | | |
| BALANCE DUE: | | \$0.00 | | |

+ Add more Entries for John R. Doe Empty Cart Save this Cart for Later Check-out

18. Review your cart!

DO NOT SIGN OUT AT THIS POINT, OR YOUR ENTRIES WILL NOT BE SAVED.

You can still select, “Add More Entries” if anything is missing.



CAMPBELL COUNTY FAIR

INFORMATION

Do you agree to the following?
Below are items which are about to be entered.

⚠️ You have one more step remaining. Your items WILL NOT be added until you type YES in the box below and click "submit"

| Item | Description | Amount |
|---|----------------------------|----------------|
| John Doe's Items: | | |
| 2019 Junior Member | Class: 601 - Junior Member | \$5.00 |
| 2019 | Reg: 10100 | |
| | Class: Green Closure | |
| Total for John Doe with 1 entries: | | \$5.00 |
| 1 TOTAL ITEMS IN CART: | | \$5.00 |
| PAYMENTS: | | -\$5.00 |
| BALANCE DUE: | | \$0.00 |

Signature:
I understand that as an exhibitor, and necessary in order for all participants to have an enjoyable and memorable experience, I will be required to follow the rules and regulations of the fair, and to comply with all rules and regulations of the fair. I further understand that failure to abide by these guidelines will result in my entry being disqualified.

I believe that my participation in the 2019 Campbell County Fair will demonstrate my capability, knowledge, and skill as a exhibitor, manager, staff, and exhibitor and an exhibitor of livestock and animals.

I attest that I have read the rules that govern the Campbell County Fair and agree to abide by the rules that have been set forth by the Campbell County Fair.

I will fill out, sign, and have my parent sign the **Authorization for Emergency Medical Care/Liability Release** (found in the fair book) behind an entry form and turn it in to a representative of the fair office or extension office personnel. Another acceptable method would be to email the form to: extension@campbellcountywy.gov or fax it to: (307) 682-7281.

My participation in the Campbell County Fair requires that my entry is entered by the **July 16th, 5pm** deadline and that I will turn in the authorization for Emergency Medical Care/Liability Release form.

YES ☐ agree to the above statement (type this if you agree)

Submit

By clicking "YES" you agree and are bound by the above statement. This is a legal document. If you do not agree, please do not click "Submit".

“Save this cart for later” will only save the entries. This does not mean that you have submitted them to the fair. If you log out without saving your cart, your entries WILL NOT BE SAVED!

You can come back in and add more entries after you have checked out up until the entry deadline.

19. You must agree that you will abide by the rules and regulations in the Campbell County Fair book.

20. Please review it carefully before submitting your entry. Please note if you don't type YES & click the “submit” button your entries will be saved, but not submitted to the fair office.

You MUST click the “submit” button for your entry to be finalized!

Register Entries Review Confirm Finish

Completed!

✓ **Upload of files needed**
Your entries were successfully submitted however you have 1 entry that requires a file to be uploaded (document, photo, audio, or video).
Click the "Upload" button to be taken to a location to upload your file.

If you experience difficulty or need to cancel your file at a later time, you can do so by logging in and choosing "My Account".

Continue to print

Transaction Summary for Campbell County Fair

Confirmation ID: campb-811710282182

| | |
|-------------------------|-----------------------|
| Total Exhibitors: | 1 |
| Total Entries: | 1 |
| Total Additional Items: | 0 |
| Transaction Time: | 4/27/2019 10:28:22 AM |
| Transaction Amount: | \$5.00 |
| Transaction Payment: | \$5.00 |
| Transaction Balance: | \$0.00 |

☐ Also email a copy of my receipt to: extension@campbellcountywy.gov

View Detailed Receipt **Upload Files**

21. Your entry is completed and will be automatically sent to the fair office. You will receive a confirmation email, please keep this for your records.

22. You can Print Detailed Receipt here. After clicking, a pop-up window will come open to display the receipt.

If at any time you need assistance you may call the Extension Office at 682.7281 or the Fair Office at 687.0200 or email your questions to

entries@campbellcountywy.gov, subject line “Online Entry Help” and we will respond as quickly as possible.

Register Entries Review Confirm Finish

Thank you!

Your items were submitted and will be processed by the Extension/Fair Office shortly. All items must be approved before final acceptance into the fair.

You may also go to your account to review this and past transactions as well as choose other printing options. To do this click "Go to My Account Summary".

We value your feedback!
Would you take a second to let us know your experience with this website?

Rate your experience:
★★★★★ [Clear](#) I love it! This website is very easy to use and understand.

Comments:
Write your comments here





HOW TO ENTER TAG ID IN SHOWWORKS

| | |
|-----------------|---|
| Department | Youth Livestock (J) |
| Division | J-002 Youth Market Beef |
| Class * | 001 : Market Beef |
| Tag ID * | 39946 ← Last 5 digits go here |
| Description | |
| Club * | Little Powder |
| Electronic ID * | 949000011139946 ← All 15 digits go here |

PLEASE LIST THE LAST 5 DIGITS OF THE TAG ID IN THE TAG ID FIELD AND ALL 15 IN THE ELECTRONIC ID FIELD.

<https://campb.fairwire.com/>

We need both fields in order for the scanners to work with the Ipads

Help Wanted



The Campbell County Fair
is in need of clerks for the 2022 Fair.

Must be 16 to apply.

These are paid positions.

Contact Tanya at the Fair
Office for more information.

307-687-0200

Please spread the word and share with anyone who may be interested!

FASHION & FABRIC CONSTRUCTION &
STYLE REVUE JUDGING DAY WILL BE

FRIDAY, JULY 29TH

9 AM - 3 PM @ THE HERITAGE CENTER

- DURING THIS TIME MEMBERS WILL BRING THEIR CONSTRUCTED CLOTHING AND NON-CLOTHING ITEMS (I.E. PILLOWCASES/BAGS) AND BUYMANSHIP EXHIBITS TO BE JUDGED. THIS IS THE ONLY TIME THESE ITEMS ARE JUDGED.
- INTERVIEW JUDGING & MODELING TIMES WILL BE SCHEDULED AND YOU WILL BE NOTIFIED OF YOUR TIME VIA MAIL AND EMAIL.

PUBLIC STYLE REVUE

SUNDAY, JULY 31, 2022 @ 7 PM - CAM-PLEX HERITAGE CENTER
(DOORS OPEN AT 5:30 PM FOR MEMBERS TO GET READY. PLEASE ARRIVE NO LATER THAN 6:15 PM TO GET READY & LINE UP).
IF YOU MODELED DURING JUDGING, YOU MUST MODEL AT THE PUBLIC STYLE REVUE TO RECEIVE YOUR PRIZES, PREMIUMS AND/OR TRIPS.


On June 28th the Junior Master Gardeners took a trip to the Big Horns to identify wild flowers. We hiked down Crazy Woman Canyon and enjoyed lunch at Tie Hack. If you are interested in joining Junior Master Gardeners, classes will start in October. You must be enrolled in 4H to participate!



GARDEN WALK

JULY 9TH, 9AM - 4PM

Tickets will be
available July 5th at
the Extension Office

 UNIVERSITY
OF WYOMING
EXTENSION
Campbell County

 master
gardener





CAMPBELL COUNTY FAIR

INFORMATION

2022 Campbell County Fair Schedule of Events

Monday, July 25

5pm 4-H Cat Show Vaccination Certificates Due (FO)

Friday, July 29

7am-8am 4-H Dog Show Check-in (PL)

8am 4-H Dog Show - Agility (PL),
Conformation, Showmanship (EH)

9am Fabric & Fashion Modeling & Judging (HC)

7pm **Demolition Derby (MSP)**

Saturday, July 30

8am-7pm Camper Check-In

7am-9am Youth Horse Show Check-In (WA - Awards Shack)

10am Youth Horse Show - Showmanship, Halter, English &
Programmed Ride (WA)

12Noon-4pm **Red, White, and Blue Charity Barbecue**

(Marquee Camp Ground - Admission \$20/Person)

3pm **Campbell County Jackpot (WA)**

4pm 4-H Cat Show (EH)

Sunday, July 31

8am Youth Horse Show - Performance (WA)

9am-7pm Camper Check-In

12Noon-6pm Exhibit Hall Set-Up for Supers (WYC - SP)

1pm Miss Campbell County Pageant (HC)

2pm Youth Horse Show Timed Events (WA)

All Jr. Horse released following show - No Exceptions

2pm **CC Fair, Betty Hough Memorial Youth Rodeo (WA)**

4pm-7pm Barns Open for Equipment Drop Off &
Herdsmanship Decorating Only (All Items Left at
Your Own Risk)

7pm Style Show (HC)

Monday, August 1

6am-10am Supreme Cow Contest Check-In (FSB)

7am-10am Barns Open for Equipment Drop Off &
Herdsmanship Decorating Only (All Items Left at
Your Own Risk)

8am-10am FFA Exhibits Early Drop Off (WYC - SP)

9am-4pm 4-H Interview Judging (WYC - SP)

9am-7pm Camper Check-In

12Noon Supreme Cow Contest (FSB-B3)

4pm-8pm Barns Open For Livestock Drop Off / Supers will
distribute free shaving tickets for pens/stalls

4pm-7pm Open Class Exhibits / FFA / Wool / Mini Corner
Entries Due (WYC - SP)

7pm Campbell County Goat Roping (B3)

Tuesday, August 2

7am-12Noon Barns Open For Livestock Drop Off / Supers will
distribute free shaving tickets for pens/stalls

8am-11am Floriculture & Garden / Mini Corner Entries Due
(WYC - SP)

9am-9pm Trade Show Set - Up (WYC - EQ/FR)

12Noon All Youth Livestock Due [Beef, Swine, Sheep, Poultry,
Meat Goats, Rabbit, Market Goats, Dairy Cattle,
Dairy Goats, Llamas & Alpacas] (CP/EP)

12:30pm Mandatory Meeting - ALL Livestock Exhibitors (CP)

1pm Open Class Exhibits / FFA / Wool Projects Judged
(WYC - SP)

2pm Swine Weigh-In (CP)

2pm Market Goat Weigh-In (FSB)

2pm Rabbit Meat Pen Weigh-In (CP)

3pm Market Lamb Weigh-In (FSB)

3pm-5pm Open Rabbit Entries Due - Paperwork Only (CP)

5pm Sheep Lead Entries Due - Paperwork Only (FO)

7pm Campbell County Goat Roping - (B3)

Wednesday, August 3

7am Market Beef Weigh-In (FSB)

8am Youth Market/Breeding Meat Goat Show (EP)

10am Open Class Rabbit Show, Followed by the Youth
Rabbit Show (CP)

10am-7pm Trade Show & WYC Open (WYC)

12Noon-3pm Ultrasound Contest (EP)

3pm Youth Dairy Cattle & Dairy Goat Show (EP)

Youth Jr. Llama & Alpaca Show Immediately
Following Dairy Show (EP)

7pm **Friends of Fair Adult Evening Out,
Kip Attaway & Grinnings Axe House (EH)**

7pm-10pm Youth 4-H / FFA Member Dance (B3)

Thursday, August 4

7am-9am Open Class Poultry & Entries Due (CP)

8am Youth Sheep Show (EP)

Sheep Lead during lunch break of Sheep Show

10am Open Class Poultry Show, followed by Youth Poultry
Show (CP)

10am-7pm Trade Show & WYC Open (WYC)

4pm 4-H Livestock Judging Contest

6pm **Ranch Rodeo (MSP)**

Friday, August 5

9am Youth Beef Show (EP)

10am-7pm Trade Show & WYC Open (WYC)

4:30pm **Pig Wrestling Calcutta (MSP)**

6pm **Pig Wrestling (MSP)**

Saturday, August 6

8am Youth Swine Show (CP)

10am-7pm Trade Show & WYC Open (WYC)

11am Pioneer Dinner (EH)

12Noon Dachshund Races (MSP Grass)

2pm Fur Kids Foundation Watermelon Eating Contest (PL)

3pm Mini - Animal Show (EP)

5pm Round Robin Showmanship (EP)

5pm-7pm Release All non-sale Poultry & Rabbits
(Must be Removed from Central Pavilion)

5pm-7pm Release All Static Exhibits (WYC-SP)

7pm-10pm Release All non-sale Animals

7pm **Live-A-Little "Monster Truck Show" (MSP)**

Sunday, August 7

5am-7am Release ALL remaining non-sale Animals

8:30am YLS Mandatory Meeting and Sale Setup (CP)

11:30am Sale Buyer Lunch (CP)

1pm **Youth Livestock Sale (CP)**

The Campbell County Fair schedule/events are subject to change
based on the current health guidelines & restrictions.

Cam-Plex Multi-Event Facilities

| | | | |
|-----|------------------|------|------------------|
| B3 | Barn 3 | PL | Plaza |
| CP | Central Pavilion | PLT | Plaza Tent |
| EP | East Pavilion | WA | Wrangler Arena |
| EH | Energy Hall | WYC | Wyoming Center |
| FO | Fair Office | - EQ | Equality Hall |
| FSB | Fair Scale Barn | - FR | Frontier Hall |
| FST | Free Stage Tent | - SP | Spirit Hall |
| HC | Heritage Center | TBD | To be Determined |
| MSP | Morningside Park | | |

UW Extension Service
US Department of Agriculture
Campbell County Extension Office
412 S. Gillette Ave.
Gillette, WY 82716-4200

PRST MKT ML
US POSTAGE PAID
GILLETTE, WY 82716
PERMIT NO. 175

ADDRESS SERVICE REQUESTED

"The University's policy has been, and will continue to be, one of nondiscrimination, offering equal opportunity to all employees and applicants for employment on the basis of their demonstrated ability and competence without regard to such matters as race, sex, gender, color, religion, national origin, disability, age, veteran status, sexual orientation, genetic information, political belief, or other status protected by state and federal statutes or University Regulations."

MANDATORY

*****TAG PICK UP AND ATTACHMENT FOR 2022*****

*****DOG AND HORSE PACKETS*****



ALL STATIC TAGS MUST BE PICKED UP AT EXTENSION OFFICE STARTING AT 9 AM JULY 20TH THROUGH 4:45 PM JULY 27TH.

THE TAGS MUST BE ATTACHED TO ITEMS, ALONG WITH YOUR 3X5 CARD ANSWERING THE FOUR QUESTIONS STATED IN THE FAIRBOOK FOR EACH STATIC ENTRY BEFORE INTERVIEW JUDGING, MONDAY, AUGUST 1ST, 2022.

NO EXCEPTIONS!!

HORSE AND DOG PACKETS WILL ALSO NEED TO BE PICKED UP DURING THIS TIME FRAME THIS YEAR

THIS IS ALSO A GREAT OPPORTUNITY TO TURN IN YOUR AUTHORIZATION FOR EMERGENCY MEDICAL CARE FOR COUNTY FAIR IF YOU HAVE NOT COMPLETED IT YET!!