

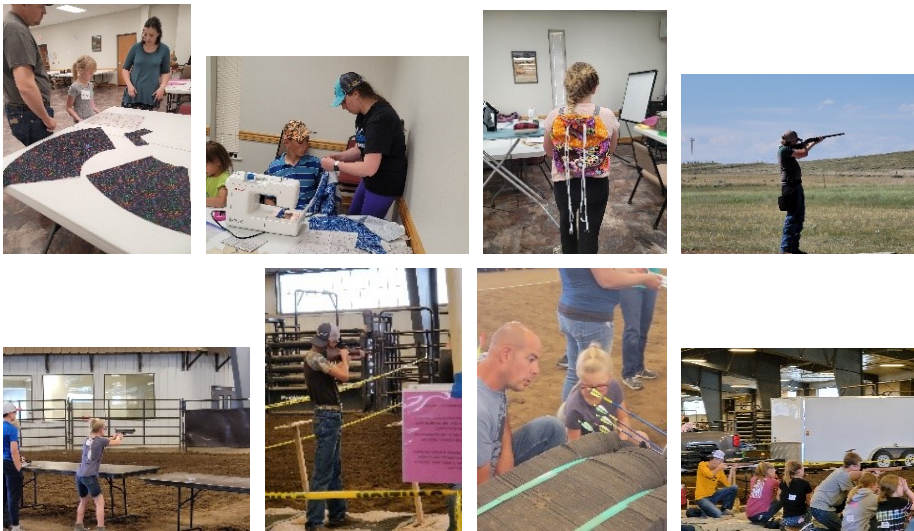
The Clover Blast

Hello everyone,

It is hard to believe that County Fair is just around the corner in a few weeks. County Fair Checklist:

- I have all my entries completed and have received a confirmation email listing my entries.
 - * If not, please go here and enter all you fair entries
<https://www.ccgov.net/2055/Fair-On-Line-Entry> by July 19th at 5pm. If you need help with this or have questions, please call 307-682-7281. Remember you are a new exhibitor every year for fair entries.
- I have read through this newsletter for any important class and fair information.
 - * July Classes
 - * Fair schedule
 - * Static Tag pick-up information – pick up will be at Extension again this year.
 - * Interview Judging Club Schedule
- Pig Wrestling entry forms can be picked-up at: CBH CO-OP, Goven/Thar's Farm & Ranch Supply, Bomgaars, and Tractor Supply. Registration will start at 5:30 pm, July 13th, on a first come first serve basis. All paperwork must be completed and signed with payment ready to go when it is your turned in. (Look for remaining details on the entry form.) For questions concerning this event please call the fair office at 307-687-0200.

The month of June 2021!!! Sewing Conference, County Shoot, Showcase Showdown.



July/August 2021

INSIDE THIS ISSUE

Member Info.....	2-7
Horse.....	8-9
Livestock	9-11
Shooting Sports.....	11
County Fair	12-22

SPECIAL POINTS OF INTEREST

- Deadlines!!!!
- Livestock Events
- County Fair



July

- 5-23: Session 2 Summer Day Camp
- 19: Fair Entries & Horse Safety Certifications Due
- 8-11: State Shoot - Douglas
- 12 & 19: Rodeos
- 17: Horse Progress Show
- 19: Fair Entries Due
- 19: Shooting Sports Banquet
- 13-15: Cloverbud Camp
- 30-Aug 8: Campbell County Fair

August

- 8: Youth Livestock Sale
- 9: Western Junior Signup Mtg
- 9: Mandatory WY State Fair Mtg
- 17-21: Wyoming State Fair
- 25: Record Book/Portfolio Class

September

- 7: Record Books/Portfolios Due

October

- 1: New Year Begins!
- 1: Achievement Night
- 3-9: National 4-H Week

4-H GROWS HERE



Happening Weekly

Dog Practices

Monday and Wednesday 5:30 pm @ Clover Corrals

Poultry Class

Thursday 5:30pm @ Clover Corrals



Don't Miss the
DEADLINE!

**JULY 19TH
COUNTY FAIR
ENTRIES DUE
ONLINE BY 5:00 PM**



COMPLETE YOUR FAIR ENTRIES
[HTTP://CAMPB.FAIR.WIRE.COM](http://CAMPB.FAIR.WIRE.COM)

WRAP UP YOUR STATIC PROJECTS!

SIGN UP FOR FAIR REMIND!
@4-HFAIR

COME BY EXTENSION FOR STATIC TAGS
JULY 22-28

SEE YOU AT FAIR
JULY 30-AUG 8!

FILL OUT YOUR RECORD BOOK NOW

GROW YOUR 4-H YEAR RIGHT!
SHOW US WHAT YOU'VE DONE IN 4-H AT FAIR!



Sunday	Monday	Tuesday	Wednesday	Thursday	Friday	Saturday
				1 Photo Class Shelter 5 10:00 am	2	3
4	5	6 Intermediate/Advanced Cake Conference	7	8	9 State Shoot	10
11 State Shoot	12 Rodeo Wrangler 5:00pm	13 Cloverbud Camp	14 Photo Class Ponderosa 2:00pm Modeling Clinic Cottonwood 6:00pm	15	16	17 Horse Progress Show KPH Livestock Workshop Barn 3 9:00am
18	19 Rodeo Wrangler 5:00pm SS Banquet TBD Fair Entries Due online by	20	21	22 Pickup Static Tags	23	24 Livestock Workshop Barn 3 9:00am
25	26 Pickup Static Tags	27	28	29	30 County Fair	31



AUGUST

CALENDAR

Sunday	Monday	Tuesday	Wednesday	Thursday	Friday	Saturday
1	2	3	4	5	6	7
<h1>Campbell County Fair</h1>						
8	9 Western Jr. Livestock Show Meeting Cottonwood Rm 4:30pm WSF Mandatory Meeting Cottonwood Rm 5:30pm	10	11	12	13	14
15	16	17	18	19	20	21
<h1>← State Fair →</h1>						
22	23	24	25 Record Book Class Cottonwood Rm 4:00pm	26	27	28
29	30	31				



ITEMS TO CHECKOUT! FOR FREE, A FEE, OR DEPOSIT!

- Two sets of clippers
- Horse Clippers
- Blower
- Scales for sheep/goat/swine
- Leathercraft items
- Sewing Machines
- Sergers
- Curriculum
- Cake Decorating items
- Leadership Totes
- Animal Curriculum Bags
- And More!

Photo Matting Class with Katie Ford - The Dos & Don'ts for Interview Judging.

When: July 16th, 2021 from 2 pm -4pm.

Where: Ponderosa Room

Please Bring: 2 photos to matte for fair. Only two photos per member (8x10 or 5x7, or one of each size). We supply the rest of materials needed.

YOU MUST RSVP 307-682-7281 BY JULY 7TH

MEAT SCIENCE CLASS



JULY 16TH - 9:00 AM - 11:00 AM

Register at the Extension Office (307) 682-7281

DOG PRACTICES

@ 5:30-7:30PM

CLOVER CORRALS!

PLEASE FOLLOW
PROPER HEALTH
POLICIES

MONDAYS &
WEDNESDAYS

SHOWMANSHIP,
CONFORMATION,
OBEDIENCE,
RALLY, AGILITY!





Cake Decorating Conference 2021

Intermediate/Advance (3 yrs or more of
experience) - July 6th and 7th

6 pm - 8 pm

Please call to RSVP, 307-682-7281
Space is limited.

Please come with ideas of what you
would like to decorate your cake
form.

Cake forms will be provided for those
attending both days of each session.

Modeling Clinic

JULY 14 TH

6:00PM- 7:00PM

GAMB COTTONWOOD ROOM

RSVP BY JULY 12TH @ NOON - 682-7281

Bring shoes you plan to wear and accessories like jackets for Style Review.

If you have any questions, contact Celeste@ 307-682-7281

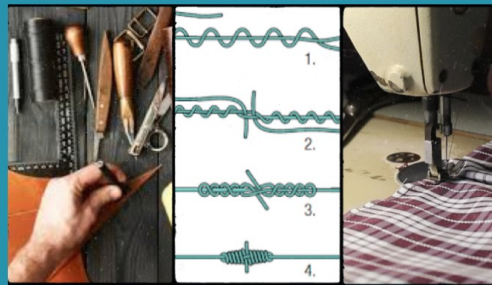
PROJECT WEEK 2021 Participants -

Don't forget to enter your creations in County Fair before July 19th.

**Leathercraft
Department H
Division 038**

**Sportfishing -
Knots for hooks &
lures
Department H
Division 056**

**Pillow Case
Fabric & Fashion
Department H
Division 28**



**Health - Dairy Goat
Products - Lotion
Department H
Division 034**

**Visual Art Class
Department H
Division 059**

**Entomology
Bee Houses
Department H
Division 027**

**Interior Design - Chalk
Painted Box
Department H
Division 027**





MEMBER
INFORMATION

CLOVERBUD RECORD BOOKS

NEW this year, we are accepting cloverbud record books. We ask that members tell us a story of their 4-H year. If you came to Cloverbud classes, come by to get your record book, finish a story, and then turn it in! Contact Kim for more information!

Due September 7th!

August 25th, 2021
4:00pm in the Cottonwood Room

Record Book/ Portfolio Class

Portfolios are DUE on
September 7th



Horse

IMPORTANT

Things you need to know for Horse Entries at Fair!

- Horse ID's were due May 3rd. If you didn't ID the horse you won't be able to enter it in County Fair.
- Horses need to be safety certified and have paperwork on file before fair entry deadline (July 19th)!
 - You can check the most up to date list at <https://tinyurl.com/4mnnskbj>
 - Leaders who safety certify please let Kim know if you have any certifications that need turned in.
- Horse is two days this year! If you have conflicts please let JD and Connie
 - Saturday, July 31st: (8am-Noon) Check in and (1pm) Showmanship, Halter, English, & Programmed Ride
 - Sunday, August 1st: (8am) Performance Classes followed by (not before 2pm) Timed Events
- Make sure to check your email as fair gets closer. Patterns and other notes will be sent out like usual.
- Sign up for the reminds! Text to 81010 Code for Fair is @4-hfair & Horse is @4-horse

SUMMER RODEO SERIES

June 14 & 28 July 12 & 19

Entries @ 5pm
Rodeo @ 6pm
Wrangler Arena



PLEASE Pre-register: <http://tiny.cc/21horserodeo>

MUST BE SAFETY CERTIFIED AND ENROLLED IN 4-H TO ENTER

May 29, June 26, & July 17

Seniors @ 8am
Intermediates @ 10am
Juniors @ 12pm
Kluz Performance Horse Arena

HORSE PROGRESS SHOWS

PLEASE Pre-register: <http://tiny.cc/21horseps>

MUST BE SAFETY CERTIFIED AND ENROLLED IN 4-H TO ENTER



Horse

4-H HORSE PROJECT TOP HAND

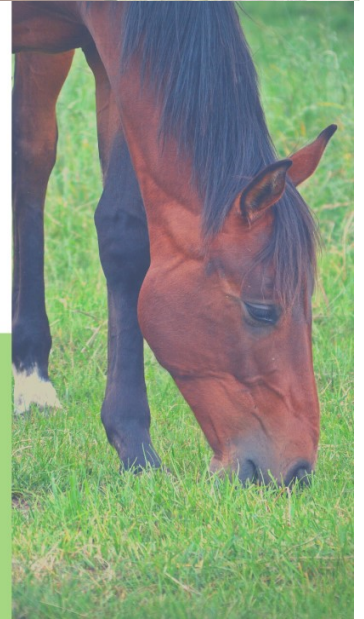
award winner will receive the following:

- Spurs
- Saddle Blanket
- A custom jacket!

TO QUALIFY:

SIMPLY PARTICIPATE!

Points will be added together from the first 3 progress shows and rodeos. Member with the highest overall points from these events will win! If multiple horses are ridden the best score in each class will count towards this award.



Livestock



POULTRY

July 8th, 15th, and 22nd
5:30pm at Clover Corrals

THINGS WE WILL COVER

- Feel free to bring a bird along to practice with!

Contact Judy Bishop, Amanda Langley, or the Extension Office with Questions

LIVESTOCK COMMITTEE SPONSORED WORKSHOPS

Livestock Committee Sponsored Classes! Anyone is welcome to join the Committee! 2nd Monday of Every Month at GAMB

JULY 17 & 24 ~ 9AM-1PM

Showmanship

BOTH CLASSES AT BARN 3

BRING YOUR ANIMALS

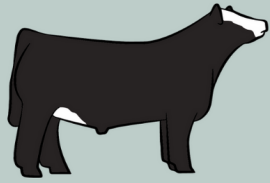


You must RSVP through: <http://tiny.cc/2021LivestockComm>

GOTCHA AWARDS

The livestock committee will again be sponsoring these awards at fair! Get caught doing good and you will get tickets to put into our drawings. They will be awarded at the Livestock Sale Meeting!

Livestock



WHEN

Tuesday-Saturday
October 5-9, 2021

WHERE

800 San Francisco St.
Rapid City, SD 57701



WESTERN JR. LIVESTOCK SHOW

EST. 1937



MORE INFO

Info meeting August 3
at 4:30pm in the
Cottonwood Room OR
Contact Rick Johnson
at 307-660-7221



WHAT

Market & Breeding
Livestock Show &
Sale, Showmanship,
Livestock & FCS Skill-
A-Thons, Livestock, &
Produce Judging,
Meat ID, Table Setting
& Centerpiece
Making,
Presentations,
Scholarships,
And Much More

<http://www.westernjuniorlivestock.com/>

Early Due 8/25/21 Late Entries taken at check-in



WYOMING
State Fair
SINCE 1905

**August 17-21,
2021**

*4-H Animal Sign ups due to Kim BY the
Wyoming State Fair meeting, August 9th at
5:30pm in the Cottonwood Room of GAMB*

Explore The Fair

Animal Shows

Breeding & Market

Beef, Sheep, Goat, Dairy Goat, Swine, Horse,
Poultry, Rabbit, Dog, Cat, Llama/Alpaca

Competitions

Static Projects, Fashion Revue, Livestock
Judging, Beef and Sheep Fitting Teams,
Performance Lamb

Livestock

*Does your
beef
project
need a
pedicure?*

Hoof Trimming @ Barn 3
July 17th
Please call the Extension Office
for an appointment
307-682-7281

Livestock Judging

Next Practice!
Practices with live animals
are being scheduled, make
sure you are signed up for
Remind-
Text @4-hjudge to 81010

At Campbell County Fair!

Thursday, August 5th at 4pm!

There will be a livestock judging contest at the fair! There will be no pre-registration, just show up to participate. Participants interested in judging at the Wyoming State Fair need to participate or contact the coach!



Shooting Sports

Shooting Sports Event Dates 2020-2021

- **It is required you enter a static exhibit in Wyoming Hall for County Fair at <https://www.ccgov.net/2055/Fair-On-Line-Entry> by July 19th at 5pm.**
- **State Shoot - July 8-11th, 2021 - Douglas, WY**
 - **Registration Deadline - June 21, 2021 - Those signed up for**
 - **State Shoot will be added to a Remind App group where information about practices and/or State Shoot Information will be shared. If you have not paid for your trip, please stop by the Extension office to pay. Thank you.**
- **Shooting Sports Banquet 2021 -**
 - **July 19th, 2021 - Rockpile Center**
 - **Please join us for dinner and awards!!! -**





CAMPBELL COUNTY FAIR

INFORMATION

Fair Entries are all online this year

<http://camp.fairwire.com>

Deadline July 19th @ 5pm ~ NO EXCEPTIONS!

Instructions can be found at

<https://www.ccgov.net/2055/Fair-On-Line-Entry>

Departments for entries!

H- Static Exhibits

J -Youth Livestock

SH - Showmanship

Want to weigh your
hog, sheep, or goat?

The Extension Office has
scales. Check them out
for \$20/year!

MANDATORY TAG PICK UP AND ATTACHMENT FOR 2021

ALL STATIC TAGS must be picked up at EXTENSION OFFICE

July 22nd-June 28th - 9am to 4:45pm

The tags must be attached to items before interview judging ,
Monday, August 2nd, 2021. No Exceptions!!

- | | |
|-------|---------------------------------------------------------------------------------------------------------------|
| 9 AM | CITY RANCHERS, BLUE RIBBON, CLOVER EXPRESS, GREEN CLOVERS, TIMBERLINE RANGERS, WILD WEST |
| 10 AM | CROSSROADS, THUNDER BASIN, WESTERN PLAINS, HOOF BEATS |
| 11 AM | ADON COUNTRY KIDS, LITTLE POWDER, HIGH PLAINS DRIFTERS, ROZET RANCHERS, ROZET ROUNDUP, WILD HORSE, HIGH HOPES |
| NOON | LUNCH BREAK - NO JUDGING OCCURS |
| 1 PM | BUCKLES & BOOTS, HORSECREEK, ROZET MUSTANGS, 4-H 101 |
| 2 PM | 21 BUTTE, 21 DIVIDE, CATS N CRITTERS, SUNSHINE, THE ROUNDERS, DOUBLE DIAMOND |

COUNTY FAIR INTERVIEW JUDGING SCHEDULE MONDAY, AUGUST 2ND

For Indoor Exhibits, WYC- Spirit Hall, Cam-Plex



CAMPBELL COUNTY FAIR

INFORMATION

**IMPORTANT --- PLEASE NOTE **

It is the responsibility of the 4-H exhibitor to transport all animals, fragile or breakable exhibits, and all oversized exhibits to the State Fair. The Campbell County Fair Board & Campbell County Extension personnel are not liable for loss, damage, or accident of any State Fair exhibits. The exhibitor accepts all responsibility for State Fair articles.



STATE FAIR

All individuals attending the Wyoming State Fair for **animals** must attend the Mandatory State Fair Meeting. The meeting will be held **August 9th @ 5:30 in the Cottonwood Room**. All State Fair livestock entries will be taken at this meeting.

Please contact Kim PRIOR to this meeting if you have a conflict.


NO LATE ENTRIES WILL BE TAKEN!!

Go to www.wystatefair.com for the Premiums Book



ALL STATIC EXHIBITS

Must have a 3" X 5" card attached with answers to the following questions:

- 
- What did you like best about your project?
 - What did you learn in the process, tools used, skills learned?
 - How long did it take to complete your project?
 - What were your goals for this project, any additional help from others, etc?



CAMPBELL COUNTY FAIR

INFORMATION

4-H APPROVED DRESS CODE FOR YOUTH LIVESTOCK AND STATIC INTERVIEWS

Long sleeved, white shirt with collar; clean, black pants (black Wranglers, Levi's, or dress pants); and appropriate and clean footwear. No tennis shoes or sandals. Dark Brown or Black boots and leather shoes (no leather tennis shoes) are required for show and sale. Caps are not to be worn in the show/sale ring. No colored boots or shoes allowed.

Horse Requirements: Western attire is required, including hats, helmets, and dark colored boots. No colored boots are allowed. Spurs and chaps are optional.

Cat and Dog Requirements: Appropriate attire to compliment the animal. Cat Showman must wear Long-Sleeved shirts.

Dairy Cattle & Goat Requirements: Long sleeved white shirt, white pants and brown or black leather shoes (no leather tennis shoes). For safety purposes, boots are preferred.

Interview Judging appropriate business casual attire for example: a long or short sleeve button-up collar shirt or polo, pants, footwear with closed toe shoes.



YOUTH LIVESTOCK

Have you done your Fair Entries yet? Here's some important tips!
<http://campb.fairwire.com>



Department H is where you will enter your static exhibits! DO NOT enter your live animals here.

Department J is for Youth Livestock. This is where you enter your LIVE animals.

Don't forget about showmanship! Showmanship is department SH. Showmanship is the exhibitor and how they show. If you believe you want to participate in Showmanship sign up now!

We can always scratch you from an entry, but we **CANNOT** add you after the **July 19th** deadline!



CAMPBELL COUNTY FAIR

INFORMATION

CAMPING AT FAIR

1. **FEE:** A fee of \$100 will be charged for each camper space during the Campbell County Fair. Spaces can be rented through the Campbell County Fair Office.
2. **SPACE:** All campers must keep their space litter free and in a sanitary condition. Rowdiness, profanity or vandalism will not be tolerated. The Fair Board reserves the right to dismiss any offender for reasons satisfactory to itself, without refund. Parents/legal guardians are responsible for their children at all times. All exhibitors camping during Fair **MUST** have a parent/guardian in the camper to supervise kids during the evening hours of Fair and overnight. Guardians must be of legal age. See Dog Rules on page 12.
3. **QUIET HOURS:** There will be no congregating in any part of the campground past 11:30 pm Sunday through Thursday and 12:00 pm midnight on Friday and Saturday. All kids must be in their campers with the radios and TV's turned down. Parents/guardians must be in the camper at this time.
4. **CAMPER REGISTRATION:** Camping is only allowed in Fair Board designated areas and must be registered through the Fair Office. Violators will be towed at owner's expense. Reservations for campground can be made after January 1st of the current year by calling the Fair Office at 307-687-0200. Prior to parking camper, please check in with the Campground Superintendent or the Fair Office. Payment is due at the time of parking. Once payment is received the Campground Superintendent or Fair Office will issue a camping permit that has the contact information and phone number. The camping permit must be posted on the outside of the camper and be easily readable for emergency contact.



GENERAL POLICIES

All barns will be locked at 9:00 pm each night. All animals **MUST** be fed, watered and cared for by 9AM in the morning and 8PM in the evening.

Youth members must accompany, care for and exhibit their own livestock at the Campbell County Fair.

All non-sale animals released between 7pm 10pm Saturday August 7th and Sunday August 8th 5 am-7 am

All feed must be stored outside of the building. Fitting is to be done by 4-H or FFA members **ONLY**. Youth

members are expected to accompany, care for, feed, water, groom/ fit, and exhibit their own livestock at the Campbell County Fair. Each Youth member having livestock for show is required to keep his/her alley clean and stalls orderly at all times. However, in the interest of safety and education, a Youth member may be assisted by another active 4-H or FFA member. Assistance is defined as a learning situation, where the person doing the assisting is teaching the youth member a technique in fitting or showing. This 4-H/FFA

member is allowed only to educate the youth member the proper skill or techniques, and the youth member is expected to perform the majority of each technique/skill required. Youth member must

be involved by actively watching and listening to the person assisting them_ Any youth using electronic devices (ex_ Cell Phone, etc.) that serve as a distraction during this time will be issued a warning to get involved_

Adults/parents/guardians/leaders will be permitted to help/ assist any 4H or FFA member when it becomes a safety concern while the livestock are on the grounds. No adult/parent/guardian will be permitted to help any 4H or FFA member fit, block, or show their livestock projects while the livestock are on the grounds. Violations of

this policy must be reported to the Superintendent in a timely manner. The Superintendent and/or Fair Coordinator and/or Fair Board will investigate and address the report. If an Exhibitor is found to be in violation of the animal care/fitting policy, he/she may be disqualified from competition, forfeit any premiums/fees/awards already received, and be immediately dismissed from the fairgrounds.



****VISUAL ARTS and PHOTOGRAPHY****

Hanging Exhibits: Posters, pictures, artwork and photography exhibits should come with a method for hanging. They will be displayed on hooks that will be hung on peg boards. If the item cannot be hung, they will be displayed on the floor or table. Display Boards and posters must be able to stand on their "own" on a table or floor. The Campbell County Fair Board is not responsible for breakage due to inadequate display method.

No breakable glass allowed/use of plexiglass or shrink wrap is allowed. Failure to exhibit items in an appropriate manner will be disqualified. Example: must follow the 4-H Photography & Visual Arts display guidelines brochure found at the Extension Office or <https://tinyurl.com/duhs5j5x>.

Display Materials: 1. Foam Board - Mounted securely on a stiff foam board. 2. Matting - Picture mounted securely to frame and board on back. 3. Frame - Not suggested. If you choose to use a frame, light weight is preferred.

Hanging Options: 1. Punched Holes - Hanging hole at top center. It should be 1/2" down from the board's top and about 1/2" in diameter. 2. Wire or String - Firmly attached to the top two corners with wire strung from one side to the other. Do Not tape to the corners. 3. Hook - Small Wire command hooks at top center. **DO NOT USE:** Weak string, yarn, pipe cleaners, pop top tabs, coat hangers or tape!



****Fabric and Fashion****

*All Fabric and Fashion items will be judged on Friday July 30th
Style Show will be Sunday August 1st.*

Every Fabric and Fashion item must have an identification label SEWN into the garment. Labels are available at the Extension Office. Do not pin the labels in the garment.

All garments considered for wool awards must be labeled "Wool" by a tag sewn into the garment.



REMINDER

****Warning System at Fair ****

EXHIBIT/LIVESTOCK AREAS: The Campbell County Fair Board will utilize the Warning system in Exhibit/Livestock areas. The Warning system will work as follows for not following animal care rules (feeding/watering/tie in and tie out times) or exhibiting cleanliness.

The warning system will consist of a three-step process. Superintendents are deemed authority given by the Campbell County Fair Board to issue warnings as follows:

Yellow Card: If there is a violation of proper animal husbandry ethics, a yellow card will be attached to the stall/cage/exhibit area. The yellow card means attention needs to be given to either feed and water, or cleanliness of stall/cage, alley or tack areas.

Orange Card: If a second warning is to be given for not taking care of the issue or found in violation a second warning, Orange Card, will be attached to the stall/cage/exhibit area.

Red Card: When a Red Card is deemed necessary, a Campbell County Fair Board member and the Department Superintendent will ask the exhibitor to remove their animal(s)/exhibit from the grounds. Receiving a Red Card will result in forfeiture of premiums and Youth Livestock Sale privileges.



Sheep and Goats

Scrapies Tag: All exhibition sheep and goats must be tagged with a USDA/APHIS scrapies tag/ID. Those without scrapies identification will not be allowed on the Fairgrounds

Weigh Ins: All lambs must have been totally slick shorn within 5 days of weigh in.

Market goats must be uniformly slick shorn with 3/8 inch of hair or less at the time of weigh-in. Legs may have hair up to the hock and knee only.



Exhibition & Show Swine Import Requirements

As a reminder, it is a state of Wyoming and a Federal (USDA-APHIS) rule that all swine entering the state must be officially identified, must have a certificate of veterinary health inspection and a WLSB entry permit before coming into Wyoming. Compliance with these rules is mandatory for all importers of swine, and violations will be addressed. WLSB import requirements can be found on the WLSB website at <http://soswy.state.wy.us/Rules/RULES/8634.pdf>.

All swine must have a certificate of veterinary inspection, issued in the previous thirty (30) days, showing a permit obtained from the Wyoming Livestock Board, within the previous ten (10) days. All swine imported will be placed under quarantine on the farm of destination for a Pseudorabies re-test to be completed within thirty (30) to sixty (60) days after import.

Wyoming will not accept swine that have moved through more than one market in the last thirty (30) days prior to arrival in Wyoming.

All swine must be individually identified with ear tags, breed association-approved ear notches to tattoos are acceptable identification for purebred breeding swine.

Brucellosis: Swine for exhibition purposes entering Wyoming must originate directly from a validated Brucellosis-free herd or state, or if over 3 months of age, be negative to the Brucellosis card test within thirty (30) days prior to date of entry (test must be by state -- federal approved laboratory).

Pseudorabies: Swine for exhibition purposes must originate from a Qualified Pseudorabies Negative Herd or Stage 5 or 4 state and further, must be transported directly from the Qualified Pseudorabies premise or Stage 5 or 4 with no stops, drop-offs, pick-ups, at any site that is not a Qualified Pseudorabies Negative premises and will be quarantined on arrival for Pseudorabies re-test thirty (30) to sixty (60) days from date of entry.

Swine not originating from a qualified Pseudorabies negative herd stage 4 or 5 state, must be tested for Pseudorabies within thirty (30) days prior to entry and will enter Wyoming under quarantine and isolation from all other swine for re-test no sooner than thirty (30) days and no longer than sixty (60) days from date of entry.

NOTE: All swine brought into the state for purpose of resale for 4H and FFA projects will be quarantined to the person holding the sale, or the Wyoming individual importing the animals. It is the responsibility of the sale management or the importer to notify this office with complete names and addresses of all buyers and the swine's destination. This information will also include the individual identification of the swine received. After this office receives the above information and after all swine are accounted for, the notice of quarantine will be lifted from sale management or the original importer. New quarantines will be issued to the new buyers.

If you purchased your swine from out of state please bring your paper to Fair check-ins with you.

CAMPBELL COUNTY FAIR

Campbell County Fair - ShoWorks Entry Process

Youth Livestock Sale
Campbell County Fair

1 Register 2 Entries 3 Review 4 Confirm 5 Finish

Welcome
Printer Friendly Version

Welcome to the Campbell County Fair online entry system. Please start by creating a log-in. Type your complete First and Last name (no middle name) - if you are a family with multiple entries, please select "Quick Group". If you are entering in both Open Class, 4-H/FFA/Junior Shows, you can use one entry form.

For assistance, you may call the Extension Office 307.682.7281, the Fair Office 307.687.0200 or email your questions to Entries@ccgov.net, subject line "help"; and we will respond as quickly as possible.

Entries must be received by the July 16th, 5pm deadline.

1. To enter exhibits in the Campbell County Fair first go to

<https://www.ccgov.net/1536/Youth-Information-Page> or

<https://www.ccgov.net/262/4-H-Forms-Registrations> and click on the Enter Here.

2. Select the Sign In icon on the upper right hand side of the screen.

I am a... -- Choose a type --
Exhibitor
Quick Group
Administrator

3. Once you have selected Sign In, select "Choose a Type" from the drop down menu. This allows you to select the type of exhibitor.

4. Select "Exhibitor" for an individual.

1 Register 2 Entries 3 Review 4 Confirm 5 Finish

Registration

Login: Please log in as an exhibitor or create a new account.

First Name: John R.
Last Name: Dike

I am a new exhibitor or have yet to register this year
 I have previously registered this year

CONTINUE →

5. Proceed to fill out the LEGAL first, and last name of the person entering an exhibit.

6. Select "I am a new exhibitor." Even if you have participated in fair in previous years you are still considered a new exhibitor if you have not used ShoWorks for the Campbell County Fair before.

Group

New Group: Here you can set any defaults for this group.

Group User Name: Heald Family
Password: ****
Re-type Password: ****
e-mail (optional): healdbj@gmail.com
Default Club (optional): Young Leaders

Continue →

If you would like to enter an entire family or group, select Quick Group and that will allow you to do all the entries for your family under one account.

Type in group user name. Choose a password, retype the password. Put in a valid email so that your receipt will be sent to you. And select the club to start with (You can do 4-H and FFA entries under Quick Group, just make sure for each individual exhibit you have the right club selected.)



CAMPBELL COUNTY FAIR

INFORMATION

7. Create a password. You may log-in numerous times by using your first name, last name, and password.

8. Complete form. All fields with asterisk are required to move on.

9. Select continue once all the fields are filled out.

10. Registration Confirmation, make sure the information is correct and select "Continue"

11. To make an entry, choose the department in which you want to exhibit.

12. Choose a division you are entering from the drop down list.

13. Choose the class you are entering from the drop down list.

14. Choose the club you are entering for. You will have to do this for each entry.

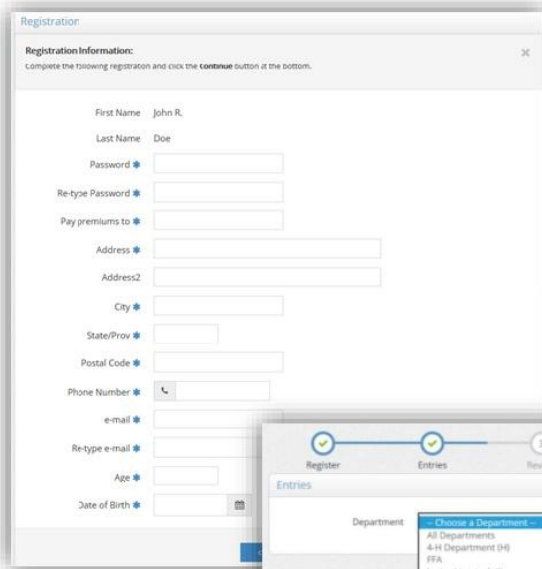
15. If you are exhibiting in both FFA and 4H you can enter both under the same profile.

16. If exhibiting a market animal you will need to enter the tag# for each entry.

17. After selecting, the department, division, and class, select "Add Entry to Cart"
 "Add a different entry" will take you back to choose your department

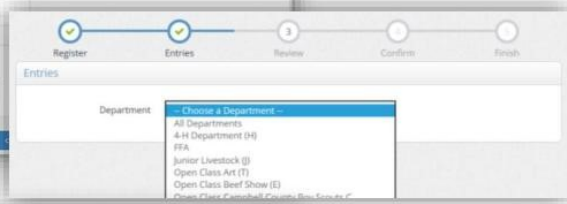
"Add similar entry" will take you to enter in additional classes under the same Department and Division you just entered in.

Remember if you are wanting to exhibit multiples in the same class, you must enter them in the class multiple times. Ex. If you plan to show 5 photos, you must enter 5 times.



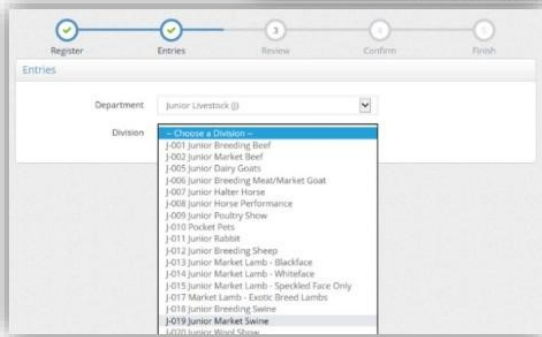
Registration Information: Complete the following registration and click the continue button at the bottom.

First Name: John R.
 Last Name: Doe
 Password *
 Re-type Password *
 Pay premiums to *
 Address *
 Address2
 City *
 State/Prov *
 Postal Code *
 Phone Number *
 e-mail *
 Re-type e-mail *
 Age *
 Date of Birth *



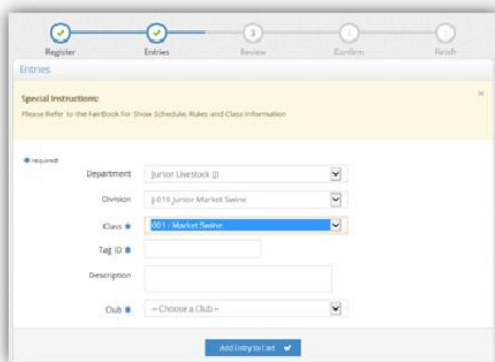
Register Entries Review Confirm Finish

Department: Choose a Department --
 All Departments
 4-H Department (4H)
 FFA
 Junior Livestock (J)
 Open Class Art (T)
 Open Class Beef Show (E)
 Open Class Campbell County Bee Show (C)



Register Entries Review Confirm Finish

Department: Junior Livestock (J)
 Division: Choose a Division --
 J-001 Junior Breeding Beef
 J-002 Junior Market Beef
 J-005 Junior Dairy Goats
 J-006 Junior Breeding Meat/Market Goat
 J-007 Junior Halter Horse
 J-008 Junior Horse Performance
 J-009 Junior Poultry Show
 J-010 Pocket Pigs
 J-011 Junior Rabbit
 J-012 Junior Breeding Sheep
 J-013 Junior Market Lamb - Blackface
 J-014 Junior Market Lamb - Whiteface
 J-015 Junior Market Lamb - Speckled Face Only
 J-017 Market Lamb - Exotic Breed Lambs
 J-018 Junior Breeding Swine
 J-019 Junior Market Swine
 J-020 Junior Wood Show

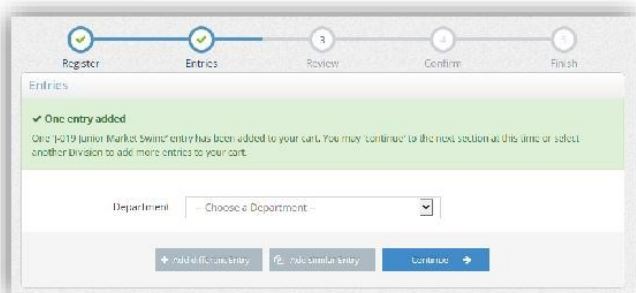


Register Entries Review Confirm Finish

Special Instructions: Please Refer to the FairBook for Show Schedule, Rules and Class Information

Department: Junior Livestock (J)
 Division: J-019 Junior Market Swine
 Class: J01 - Market Swine
 Tag ID *
 Designation
 Club: Choose a Club --

Add Entry to Cart



Register Entries Review Confirm Finish

Entries

One entry added
 One "J-019 Junior Market Swine" entry has been added to your cart. You may continue to the next section at this time or select another division to add more entries to your cart.

Department: Choose a Department --

Add Different Entry Add Similar Entry Continue

CAMPBELL COUNTY FAIR

INFORMATION

18. “Continue” when you are finished with your entries.

19. Review your cart!

DO NOT SIGN OUT AT THIS POINT, OR YOUR ENTRIES WILL NOT BE SAVED.

You can still select, “Add More Entries” if anything is missing.

“Save this cart for later” will only save the entries. This does not mean that you have submitted them to the fair. If you log out without saving your cart, your entries **WILL NOT BE SAVED!**

You can come back in and add more entries after you have checked out up until the entry deadline.

20. You must agree that you will abide by the rules and regulations in the Campbell County Fair book.

21. Please review it carefully before submitting your entry. Please note if you don’t type YES & click the “submit” button your entries will be saved, but not submitted to the fair office. **You MUST click the “submit” button in order for your entry to be sent to the fair’s database.**

22. Your entry is completed and will be automatically sent to the fair office. You will receive a confirmation email, please keep this for your records.

23. You can Print Detailed Receipt here. After clicking, a pop-up window will come open to display the receipt.

If at any time you need assistance you may call the Extension Office at 307.682.7281 or the Fair Office at 307-687-0200 or email your questions to entries@ccgov.net, subject line “Online Entry Help” and we will respond as quickly as possible.





CAMPBELL COUNTY FAIR

INFORMATION

HOW TO ENTER TAG ID IN SHOWWORKS

Department	<input type="text" value="Youth Livestock (J)"/>
Division	<input type="text" value="J-002 Youth Market Beef"/>
Class *	<input type="text" value="001 : Market Beef"/>
Tag ID *	<input type="text" value="39946"/> ← Last 5 digits go here
Description	<input type="text"/>
Club *	<input type="text" value="Little Powder"/>
Electronic ID *	<input type="text" value="949000011139946"/> ← All 15 digits go here

PLEASE LIST THE LAST 5 DIGITS OF THE TAG ID IN THE TAG ID FIELD AND ALL 15 IN THE ELECTRONIC ID FIELD.

<https://campb.fairwire.com/>

We need both fields in order for the scanners to work with the Ipads

Help Wanted



The Campbell County Fair
is in need of clerks for the 2021 Fair.

Must be 16 to apply.

These are paid positions.

Contact Tanya at the Fair
Office for more information.

307-687-0200

Please spread the word and share with anyone who may be interested!



CAMPBELL COUNTY FAIR

INFORMATION

2021 Campbell County Fair Schedule of Events

Monday, July 26

5pm 4-H Cat Show Vaccination Certificates Due (FO)

Friday, July 30

9am Fabric & Fashion Modeling & Judging (HC)

5pm Open Class Dog Show Entries Due (FO)

7pm **Demolition Derby (MSP)**

Saturday, July 31

8am-7pm Camper Check-In

8am-12Noon Youth Horse Check-In & Sawdust Trailer Open
(entrance to the horse stalls by shack)

8am **CC Fair, Betty Hough Memorial Youth Rodeo (WA)**

12Noon-4pm Red, White, and Blue Barbecue

(Marquee Camp Ground - Admission \$20/Person)

1pm Youth Horse Show - Showmanship, Halter, English & Programmed Ride (WA)

7pm **Concert (HC)**

Sunday, August 1

8am Youth Horse Show - Performance followed by Youth Horse Timed Events (not before 2pm) (WA)
All Jr. Horse released following show - No Exceptions

9am-7pm Camper Check-In

12Noon-6pm Exhibit Hall Set-Up for Supers (WYC - SH)

1pm Miss Campbell County Pageant (HC)

2pm 4-H Cat Show (EH)

4pm-7pm Barns Open for Equipment Drop Off & Herdsmanship Decorating Only (All Items Left at Your Own Risk)

7pm Style Show (HC)

Monday, August 2

7am-10am Barns Open for Equipment Drop Off & Herdsmanship Decorating Only (All Items Left at Your Own Risk)

8am Supreme Cow Contest (FSB-B3)

8am-10am FFA Exhibits Early Drop Off (WYC - SH)

9am-4pm 4-H Interview Judging (WYC - SH)

9am-7pm Camper Check-In

10am 4-H & Open Dog Show - Agility (MSP Grass), Conformation, Showmanship (EH)

4pm-7pm Open Class Exhibits / FFA / Wool / Mini Corner Entries Due (WYC - SH)

4pm-8pm Barns Open For Livestock Drop Off / Supers will distribute free shaving tickets for pens/stalls

6pm Campbell County Goat Roping (B3)

Tuesday, August 3

7am-12Noon Barns Open For Livestock Drop Off / Supers will distribute free shaving tickets for pens/stalls

8am-11am Floriculture & Garden / Mini Corner Entries Due (WYC - SH)

9am-9pm Trade Show Set - Up (WYC - EQ/FR)

12Noon All Youth Livestock Due (Beef, Swine, Sheep, Poultry, Meat Goats, Rabbit, Market Goats, Dairy Cattle, Dairy Goats, Llamas & Alpacas) (CP/EP)

12:30pm Mandatory Meeting - ALL Livestock Exhibitors (CP)

1pm Open Class Exhibits / FFA / Wool Projects Judged (WYC - SH)

2pm Swine Weigh-In (CP)

2pm Market Goat Weigh-In (FSB)

2pm Rabbit Meat Pen Weigh-In (CP)

3pm Market Lamb Weigh-In (FSB)

3pm-5pm Open Rabbit Entries Due - Paperwork Only (CP)

5pm Sheep Lead Entries Due - Paperwork Only (FO)

7pm Campbell County Goat Roping - (B3)

Wednesday, August 4

7am Market Beef Weigh-In (FSB)

8am Youth Market/Breeding Meat Goat Show (EP)

10am Open Class Rabbit Show, Followed by the Youth Rabbit Show (CP)

10am-7pm Trade Show & WYC Open (WYC)

12Noon-3pm Ultrasound Contest (EP)

3pm Youth Dairy Cattle & Dairy Goat Show (EP)

Youth Jr. Llama & Alpaca Show Immediately

Following Dairy Show (EP)

5pm Rancher's Roundup Social (EH)

7pm **Friends of Fair Adult Evening Out, Comedian, Tim the Dairy Farmer (HC)**

7:30-11pm Youth 4-H / FFA Member Dance (FSB)

Thursday, August 5

7am-9am Open Class Poultry & Entries Due (CP)

8am Youth Sheep Show (EP)

Sheep Lead during lunch break of Sheep Show

10am Open Class Poultry Show, followed by Youth Poultry Show (CP)

10am-7pm Trade Show & WYC Open (WYC)

4pm 4-H Livestock Judging Contest

6pm **Ranch Rodeo (MSP)**

Friday, August 6

9am Youth Beef Show (EP)

10am-7pm Trade Show & WYC Open (WYC)

4:30pm **Pig Wrestling Calcutta (MSP)**

6pm **Pig Wrestling (MSP)**

Saturday, August 7

8am Youth Swine Show (CP)

10am-7pm Trade Show & WYC Open (WYC)

11am Pioneer Dinner (EH)

12Noon **Campbell County Jackpot (WA)**

12Noon Dachshund Races (MSP Grass)

2pm Fur Kids Foundation Watermelon Eating Contest (PL)

3pm Mini - Animal Show (EP)

5pm Round Robin Showmanship (EP)

5pm-7pm Release All non-sale Poultry & Rabbits

(Must be Removed from Central Pavilion)

6pm-7pm Release All Static Exhibits (WYC)

7pm-10pm Release All non-sale Animals

7pm **Octane Addictions, "Big Air at the Fair!" (MSP)**

Sunday, August 8

5am-7am Release ALL remaining non-sale Animals

8:30am YLS Mandatory Meeting and Sale Setup (CP)

11:30am Sale Buyer Lunch (CP)

1pm **Youth Livestock Sale (CP)**

The Campbell County Fair schedule/events are subject to change based on the current health guidelines & restrictions.

Cam-Plex Multi-Event Facilities

B3	Barn 3	PA	Practice Arena
CP	Central Pavilion	PL	Plaza
EP	East Pavilion	PLT	Plaza Tent
EH	Energy Hall	WA	Wrangler Arena
FO	Fair Office	WYC	Wyoming Center
FSB	Fair Scale Barn	- EQ	Equality Hall
FST	Free Stage Tent	- FR	Frontier Hall
HC	Heritage Center	- SH	Spirit Hall
MSP	Morningside Park	TBD	To be Determined

UW Extension Service
US Department of Agriculture
Campbell County Extension Office
412 S. Gillette Ave.
Gillette, WY 82716-4200

PRST MKT ML
US POSTAGE PAID
GILLETTE, WY 82716
PERMIT NO. 175

ADDRESS SERVICE REQUESTED

"The University's policy has been, and will continue to be, one of nondiscrimination, offering equal opportunity to all employees and applicants for employment on the basis of their demonstrated ability and competence without regard to such matters as race, sex, gender, color, religion, national origin, disability, age, veteran status, sexual orientation, genetic information, political belief, or other status protected by state and federal statutes or University Regulations."

MANDATORY

TAG PICK UP AND ATTACHMENT FOR 2021



ALL STATIC TAGS MUST BE PICKED UP AT EXTENSION OFFICE STARTING AT 9 AM JULY 22 THROUGH 4:45 PM JULY 28TH. THE TAGS MUST BE ATTACHED TO ITEMS BEFORE INTERVIEW JUDGING , MONDAY, AUGUST 2ND , 2021. NO EXCEPTIONS!!

THIS IS ALSO A GREAT OPPORTUNITY TO TURN IN YOUR AUTHORIZATION FOR EMERGENCY MEDICAL CARE FOR COUNTY FAIR IF YOU HAVE NOT COMPLETED IT YET!!