

# 4-H CLOVERBUDS CONNECTION

January - March 2021

## IMPORTANT INFO

Cloverbuds meet on every 3rd Thursday of the month from 4-6 pm.

January 21th

February 17th

March 17th

## 4-H HIGHLIGHTS

You must be active to participate! Please enroll at <https://4h.zsuite.org/> then come pay

\$5 to the Extension Office.

Sign up for Remind! TEXT @4-hclover to 81010

## NEW YEAR, NEW GOALS

KASEY GLADSON, MAKALA JOHNSON, SHANNON & KATIE HUDSON

Hello Cloverbud Families,

We really appreciate all of the participation we have had so far. As the Holidays approach we will have more festive projects for your Cloverbud!

Kasey Gladson:

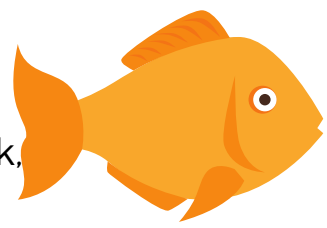
My name is Kasey Gladson and I am new to Cloverbuds this year! I was a Cloverbud before becoming a 4-H member, I remember all the fun I used to have. As the new intern in the Extension Office, I am a coordinator for Cloverbuds and my goal is to leave as much of a fun lasting impression on our current Cloverbuds as the group did on me when I was their age. I am looking forward to a year of learning and fun!

## SNOWFLAKE FACTS

Everyone loves playing in the snow, building snowman and of course snowball fights. But, what exactly is snow and where does it come from? Snow are small flakes of ice that fall down to the earth. There are little water vapors in the air and they freeze and form crystals of ice. To snow the temperature must be below 32 degrees. Each snowflake is made up of about 200 ice crystals. Snowflakes have six sides. Many people say that no two snowflakes are exactly alike, however there is no scientific proof of this.

How many snowflakes can you find in the newsletter?

# I'M BORED CRAFTS



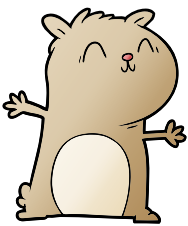
Supplies: Paper Plate, Black & Red Construction Paper, Glue Stick, Popsicle Stick

1. Cut out the center circle of the paper plate.
2. Hot glue a wood stick to the bottom of the paper plate.
3. Trace hat onto black card stock paper. Cut the hat out of the paper.
4. Decorate the hats. Example used simple red strips of paper and snowflake stickers, other options include Christmas ribbon, glitter, etc.
5. Once the hats are decorated, put the hat to the top of the paper plate using glue.

# I'M MEELTTING!!!!

Supplies: 1 box baking soda, vinegar, water, glitter & blue food coloring (optional), bowl, spoon, freezer safe container, squirt bottle, eyedropper, or baster, snowman decorations (optional)

1. Start by making a snowman! Mixing baking soda, glitter, and as much water as you need to make it form into 3 balls. Freeze for a few hours or overnight.
2. Take the 3 balls and build a snowman.
3. Add snowman accessories like buttons, top hat, eyes, button carrot nose, twigs for arms, etc.
4. Put snowman in a bowl.
5. Now it's time to melt the snowman! With parent help, Mix the a drop of food coloring with the vinegar. Slowly pour the liquid over the snowman. What happened?



# COLOR ME!!!

COLOR: The hat RED  
The nose ORANGE  
The scarf YELLOW  
The gloves GREEN  
The Scarf BLUE  
The buttons PURPLE