

4-HER'S GUIDE TO COUNTY FAIR



2023 County Fair: July 29 - August 4

This guide contains important information and instructions about County Fair. This is a supplement to the fair book. Make sure you **read the fair book carefully** to know all the rules of your particular class.



VS



Enrolling in 4-H is NOT the same thing as registering your 4-H project for fair.

Fair Entry closes July 12!!!!

www.fairentry.com

Mandatory State Fair Meeting

If you are planning to attend the Wyoming State Fair, you **must** attend this meeting.



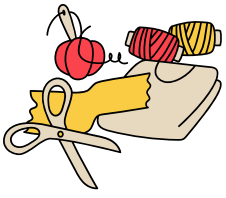
Date: Thursday, August 3

Time: 5:00PM

Where: Exhibit Hall Stage

Please be prepared to pay any fees that may be associated with your State Fair entry. If you do not turn in your paperwork by the 3PM deadline, you will be asked to go last.





FABRIC & FASHION

What to Expect & Responsibilities:

- Fabric & Fashion Judging and Style Revue Judging both happen simultaneously
- Whether you are in the Style Revue or not, all judging of pieces will be done at the same time so bring ALL your sewn entries!
- We are at the **Jeffrey Center!!**
- ATTENTION: On the Wednesday afternoon of the public style revue, fairground gates close at 4 PM. Therefore, contestants and audience members need to park OUTSIDE of the fairgrounds and walk in.
- For tips on how to prepare for the Style Review visit the State 4-H Fashion Revue website here. Their evaluation form is the same we use at county fair, so you will know what the judges are looking for.
- Narration Sheets: If you will be participating in the Public Style Revue, you must write an email to Codey Stocks providing all the info asked for on the narration sheet below. It will be read while you are on stage in your outfit. The email is due to kstocks@dteworld.com no later than Sunday, July 30th.
- See Narration Sheet Below

What to Bring:

- all your Fabric & Fashion entries
- hangers for each of your items
- styling products: blow dryer, bobby pins, etc (if you are modeling your pieces)

Where to Go:

- Jeffrey Center, 315 W Pine St (we will be in the room across from the pancake breakfast!)

When You Need to be There:

- Judging: 8AM on Saturday, July 29th, 2023
- Public Revue: Practice at 4 PM, Show at 5 PM Wednesday, August 2nd at the Fairgrounds

Consider Entering the Make It With Wool contest!



Lisa Johnson
District 9 MIWW Director
(307) 327-5318
PO Box 694 Encampment, WY 82325
johnson7294@yahoo.com

If your 4-H sewn outfit is made out of wool, you should also enter it in the Make It With Wool contest! This is a county wide contest for all ages, youth to adult, and is run much like 4-H Fabric Judging with an interview and modeling.

The contest will be held on Thursday, July 27th this year.

Contact Lisa Johnson for more info and to sign up!

CARBON COUNTY PUBLIC STYLE REVUE NARRATION SHE

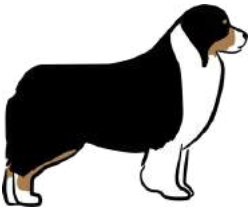
For each outfit, email the following info for the narration that will be read during the Public Style Revue on Wednesday of County Fair:

- name
- number of outfits to be modeled (no more than 3)
- age
- hometown
- grade & name of school
- parents names
- interests and hobbies
- description of outfit: you can use the description from the pattern envelope or write one yourself. Be sure to tell us about the fabric, stitching or modifications made, why you chose it and what you like about it!

NOTE: Narratives should be longer than 15 seconds and less than one minute long.

Email to Codey at kstocks@dteworld.com by Sunday evening, July 30th!





DOG

Superintendent: Jessica Paul

What to Expect & Responsibilities:

- We will start Agility with the highest level and work our way down.
 - ✓ Level 1 - with a leash
 - ✓ Level 2 - with a leash or tab
 - ✓ Level 3+ - without a leash
- Do not go to the judges with issues, please see Jessica.
- Have your hair up, no hats, no flip-flops, and no high heels.

What to Bring:

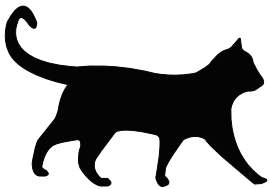
- Comfy clothes and tennis shoes you can run in for agility, business casual clothes, flat collar, choke collar if needed, showmanship/confirmation leash, 6" leash or tab, kennel if you choose, treats, water for your dog, snacks and drinks for yourself, tent or umbrella for shade.

Where to Go:

- Multi-Plex on the Fair Grounds in Rawlins

When You Need to be There:

- Saturday July 29: Registration @ 12pm, Show Starts @ 1pm (Sr Showmanship is the first class)



CAT

Superintendent: Marla McNeese

What to Expect & Responsibilities:

- You will not be asked for a health paper or proof of vaccination at this show but if your cat acts or looks sick, you may be asked for one or you will be excused.
- Make sure to wear proper showmanship attire, even if you are not in showmanship. That's pants, long sleeved shirt, closed toed shoes. A quiet well mannered cat at home can act very differently at a show in a totally different environment. So this is for your protection.

What to Bring:

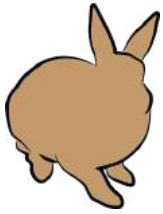
- Your cat with claws clipped, in a harness with a leash, in a cat carrier. A soft bristled grooming brush, and a rag, black pants, white long sleeved buttoned down collared shirt, closed toed shoes.

Where to Go:

- West end in Exhibit Hall, next to the foyer and restrooms.

When You Need to be There:

- Be in the Exhibit Hall at 4:45 pm on Monday, July 31st



RABBIT

Superintendent: Chelsy Smith

What to Expect & Responsibilities:

- Each rabbit will be inspected for signs of sickness before they check in. If your rabbit shows any signs of sickness, you may be asked to leave the fairgrounds.

What to Bring:

- A lock for your cage if you'd like, a waterer, a food dish, extra food, a fan, grooming tools,
- Show Clothes: black pants, white button down, closed toed shoes

Where to Go:

- Rabbit Show will be held under the big white tent east of the Poultry Barn.

When You Need to be There:

- Check In - Sunday, July 30th from 6:30 - 8:30pm and/or Monday, July 31st from 7:30 - 9:00am
- Show - Monday, July 31st at 9:30am at the East Lawn Tent



POULTRY

Superintendent:
Jessica Weber

What to Expect & Responsibilities:

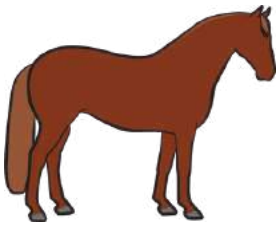
- Animals must be owned and in possession by June 15
- Two entries limited per class
- Cage door must be unlocked or exhibitor present at judging
- No Rooster can remain on fairgrounds
- More Guidelines can be found on page 76 of the fair book

What to Bring:

- feeders (both for water and feed)
- feed for your poultry
- cages provided by the fair

Where to Go & When:

- Poultry barn opens for check-in Sunday, July 30th at 6:30-8:30 pm and Monday, July 31st at 7:30- 9:00 am
- Bring poultry to poultry barn for check-ins; there will be a quick inspection of each animal before caging
- Show is Monday, July 31st @ 1PM at the East Lawn Show Tent



HORSE

Superintendents:
Curt & Kim Olson

What to Expect & Responsibilities:

- Senior classes will go first in each event, they are the ones setting an example.
- At times, both arenas will going at the same time. Pay attention and be on your toes to keep up and keep the day moving forward.
- Review the riding patterns for each class on the Wyoming 4-H website:
<http://www.uwyo.edu/4-h/projects/animal-science/horses.html>
- Review the competition guidelines for each class you are entered in, also on the Wyoming 4-H horse page.

What to Bring:

- Grooming supplies, appropriate attire to wear while riding, tack for various events, water bucket for your horse, plenty of water and snacks for you!

Where to Go:

- Horses - Enter the fairgrounds through the Rodeo Contestants Gate off of Harshman Street and unload your horse into the brand new horse barn! You may park your horse trailer in an out of the way spot near the horse barn.
- Contestants - Meet in the grandstands Sunday morning after unloading your horse @ 8am sharp!

When You Need to be There:

- Sunday, July 30th (Programmed Ride, Trail, Performance classes, Barrels, Poles)
- Monday, July 31st (Goat Tying, Cattle Boxing, Team Roping, Team Sorting, Breakaway Roping, Stake Race)
- Be at the fairgrounds to settle your horse by 7:00am both days
- **8:00 am sharp!** - Contestant meeting in the grandstands. Show to start immediately following



Youth Ranch Skills Day.

July 31st

@ 8AM

Carbon
County

Fairgrounds
Arena

Come one, come all !!!

-You do not need to be enrolled in 4-H or FFA to participate on Monday, all you need is a good horse!!

-Sign Up Day Of

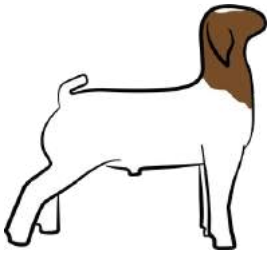
Events

Breakaway Roping
Heel -O-Matic Team Roping
Team Sorting
Goat Tying
Stake Race
Cattle Boxing



Prizes to top competitors!!





GOAT Superintendent: Shandi Cary

What to Expect & Responsibilities:

- Keep your animals fed, watered, and their pens clean.
- ALL goats must have a scrapies tag OR a registration tattoo (must have papers at Fair)

What to Bring:

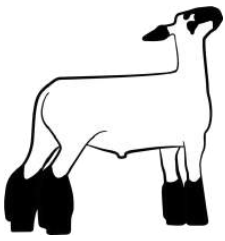
- A fan to keep the air moving around the goats as our barn gets hot, show attire, grooming supplies, water/feed bucket, feed, a halter, wheelbarrow, shovel, rakes.
- Shavings will be provided.
- Registration papers for tattoo (you should never travel with goats without them)

Where to Go:

- Arrive through the main gate off Harshman St. Unload on the east side of the goat barn

When You Need to be There:

- We will have 2 check-in times that are the same as sheep~
 - ✓ Sunday, July 30th on the east side of the sheep barn from 10:00 to 11:00am
 - ✓ OR
 - Monday, July 31st on the east side of the sheep barn from 8:00 to 10:00am for check-in.
- Weigh-In - Monday @ 1pm (Sheep Barn)
- Dairy Goat Show - Tuesday @ 8:30am (East Lawn)
- Meat Goat Show - Tuesday @ 1 PM (Multi-Plex)
- Animals are released at 4:00 on Friday.
- Your stalls will be clean and your sale animal will be left in that stall unless you are taking them to state fair. (please let Shandi Cary know if you are going to state fair.) You will take your extra goats home unless other arrangements have been made with the superintendents and/or fair board members.
- No goat should remain in the barn after Friday unless other arrangements have been made with the superintendents and/or fair board members.



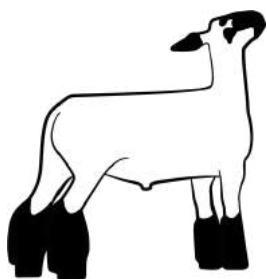
SHEEP Superintendent: Annie Jordan

What to Expect & Responsibilities:

- Read the fair book but pay special attention to pages 10, 49-50 to know the rules.
- Get to know the superintendents, Hart and Annie Jordan, for any questions you may have about your project during the fair or the weeks leading up to the fair.
- Shear your sheep and check for wool fungus a week or two before the fair. If you suspect they may have wool fungus, wash them with an antifungal shampoo. (highly recommended!)
- Stall assignments will be located on the east and west sides of the sheep barn. You will be grouped with your chapter or club. It is fun to decorate your area. This year's theme is "Stirrup some fun". (Please do not unload until your sheep have been inspected by one of our Carbon County Veterinarian Hospital (CCVH) veterinarians during the specified check-in times on Sunday and Monday morning.)
- All sheep must have their USDA/APHIS Scrapies tag in place.
- The barn will be judged for herdsman ship. This will be awarded to the club or chapter with the cleanest area and best decorations throughout the entire week.
- Keep your stalls clean at all times.
- Keep fresh water in the stalls. You may need to bring some water from home since many lambs do not like the change and refuse to drink. This causes dehydration.
- Another option is to start adding flavoring, such as a light colored Gatorade, in the weeks leading up to fair.
- Feed and exercise daily.
- Check on your lambs throughout the day.
- No drenching. (see the fair book for details about drenching)
- If you are selling a lamb in the Junior Livestock Sale, let Hart or Annie know which animal you will sell, along with their fair ear tag number. (the yellow one) Please have this information to them ASAP but no later than 3:00pm on Wednesday.
- The showman and a parent/guardian will need to sign a consignment form in the fair office in order to sell their animal. You will also need to attach an official title from a Brand Inspector. These are due in the fair office by Wednesday at 3:00pm. These have to be provided in order to sell your lamb.
- Barn closes at 10:00pm every night—no exceptions.

What to Bring:

- Your lamb that has been slick shorn at least a day or two before coming to fair.
- Blankets must be removed prior to the health inspection by our county vet.
- Halters, muzzles, and blankets. (The muzzles and blankets are optional but highly recommended. Muzzles keep them from eating the bedding as well as grain from another stall, therefore keeping them from getting sick. The blankets keep them cleaner and protects from getting bug bites, etc.)
- A short hose and soap for washing your lamb.
- Clippers and a stand for fitting your lamb.
- Wheelbarrow, shovels, and rakes for cleaning the stalls and the aisle.
- Shavings for the stalls will be provided.
- Show clothes and shoes. Nice, black jeans and a crisp, white button-down collared shirt is recommended but nice jeans and a nice, long sleeved shirt is acceptable. Closed toed boots.



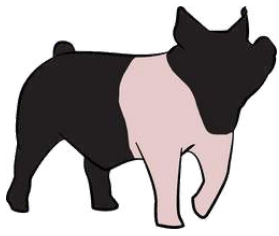
SHEEP - CONT'D.

Where to Go:

- When you arrive, you will unload on the east side of the sheep barn AFTER a CCVH veterinarian has inspected your lambs.
- Weigh-in will be on Monday at 1:00 PM in the sheep barn. There is a minimum weight to show your market lamb.
 - ✓ At least 90 pounds for whiteface lambs.
 - ✓ At least 100 pounds for blackface and speckle-faced lambs.
 - ✓ Weight classes will be posted Monday evening on the east and west sides of the sheep barn.
- The show will start at 8:30 in the Multi-Plex. Please know when your lamb will show and be in the holding area outside of the show ring when the class before yours enters the ring. We need to keep the show running smoothly and will not wait if you are not ready to go in the ring when your weight class is called.

When You Need to be There:

- We will have 2 check-in times~
 - ✓ Sunday, July 30th on the east side of the sheep barn from 10:00 to 11:00am
 - OR
 - ✓ Monday, July 31st on the east side of the sheep barn from 8:00 to 10:00am for check-in.
- When you arrive at the fairgrounds, you will keep your lambs in the trailer until a CCVH veterinarian inspects them for wool fungus and USDA/APHIS Scrapies tags.
- Monday at 1:00 in the sheep barn for weigh-in.
- Tuesday at 8:30 for the breeding and market show in the Multi-Plex
- Friday at 1:00 for the sale in the Multi-Plex. Don't forget to leave a thank you card to your buyer in the fair office before you leave the grounds!
- Animals are released at 4:00 on Friday.
- Your stalls will be clean and your sale animal will be left in that stall unless you are taking them to state fair. (please let Hart or Annie know if you are going to state fair.) You will take your breeding and extra market lambs home unless other arrangements have been made with the superintendents and/or fair board members.
- No sheep should remain in the barn after Friday unless other arrangements have been made with the superintendents and/or fair board members.



SWINE Superintendent: Tom Stockwell

What to Expect & Responsibilities:

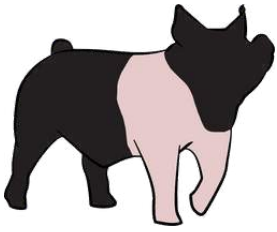
- Get to know the superintendent, Tom Stockwell, for any questions you may have about your project during the fair or the weeks leading up to the fair.
- Stall assignments will be located on the east and west sides as well as in the breezeway of the swine barn. You will be grouped with your chapter or club. It is fun to decorate your area. This year's theme is "stirrup some fun". **Please do not unload until your pigs have been inspected by the superintendent.** You can unload on the south side of the barn at the breezeway in the middle of the barn during the check-in times.
- All market swine must be tagged.
- The barn will be judged for herdsmanship. This will be awarded to the club or chapter with the cleanest area and best decorations throughout the entire week.
- Keep your stalls clean at all times.
- Water is provided to each pen in the pig barn, if there is an issue with the water let one of the superintendents know and they will get it fixed.
- Feed and exercise your pig daily.
- Check on your pigs throughout the day.
- If you are selling a pig in the Junior Livestock Sale, then a consignment form must be filled out and turned into the fair office by Wednesday @ 3pm.
- The showman and a parent/guardian will need to sign a consignment form in order to sell their animal. These are due in the fair office by Wednesday at 3:00 pm. These have to be provided in order to sell your pig.
- There is a minimum weight to show your market pig of 220 lbs unless entered in showmanship.

What to Bring:

- Show stick/whip.
- Your pigs must be washed and ear tags visible.
- A short hose, soap, brush, rags, lotion for washing your swine.
- Clippers for fitting your pig if not done before fair.
- Wheelbarrow, shovels, and rakes for cleaning the stalls and the aisle.
- Shavings for the stalls will be provided.
- Signage with you and your pigs names.
- Show clothes: nice jeans, nice preferably long sleeve, button-up shirt, close toed shoes

Where to Go:

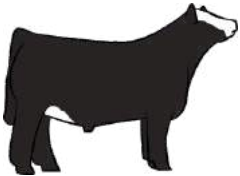
- When you arrive, you will unload on the south side of the swine barn AFTER one of the superintendents has inspected your pigs.
- **Weigh-in will be on Monday at 7:00pm in the swine barn.**
- The breeding and showmanship show will start at 6 PM in the Multi-Plex on Tuesday. Please know when your pig will show and be in the barn and listening to the show organizers.
- The market show will begin on Wednesday at 8 AM.
- Classes will be posted as soon as possible after weigh in.



SWINE - CONT'D.

When You Need to be There:

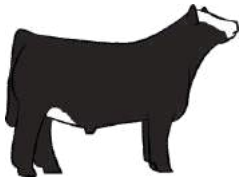
- We will have 2 check-in times~
 - ✓ Sunday, July 30th on the east side of the sheep barn from 8 am – 10 am and 4 pm – 7 pm
 - ✓ Monday, July 31st on the east side of the sheep barn from 8:00 to 10:00 am and 4 pm -6 pm with a weigh-in to start at 7 pm.
- Tuesday at 6 pm for the breeding and showmanship show in the multiplex
- Wednesday at 8 am for the market show
- Friday at 1 pm for the sale in the Multi-Plex. Don't forget to leave a thank you card to your buyer in the fair office before you leave the grounds!
- Animals are released at 4 pm on Friday.
- Your stalls will be **clean**, trash taken out, and your sale animal will be left in that stall unless you are taking them to state fair. (please let one of the superintendents know if you are going to state fair.) You will take your breeding and extra market swine home unless other arrangements have been made with the superintendents and/or fair board members.
- No swine should remain in the barn after Friday unless other arrangements have been made with the superintendent and/or fair board members.



BEEF Superintendent: James Johnson

What to Expect & Responsibilities:

- Tip: Clean things as you pack, be organized, and know how to find things easily. Pack your trailer in the order you need to take stuff out. Go set up stalls before bringing cattle in if possible - send a tack trailer and crew ahead. Don't haul cattle in the heat of the day if you can avoid it.
- Make your own beds, dirty shavings dumped outside barn, keep area clean
- We have a lot of animals this year so everyone will need to be mindful of the space you are taking up and keep your area neat and together
- Tie Up/Down Suggestion: plan 4' per calf and bring a normal cattle panel to secure in the front of your stall so you can easily tie them up and down.
- Covering your tie panel with a vinyl tarp helps protect your calf from eating whatever may be in the feed alley and prevents bedding, water, or anything else from getting blown on your calves from your neighbors.
- Fans: when using fans think about where it's blowing dirt and who can hit their head on it (you and your cow). Consider using the fan hanging brackets up front to blow air across the stall from the left side of the cattle (non-show side). If you have the two-piece brackets and want to hang two fans - stand the front one up, let the back one hang.



BEEF - CONT'D.

What to Bring:

- feed and hay - calculate how much you need, then add some! Running out at showtime is a disaster. Bring the hay they're used to eating if you can.
- feed pans, water buckets, and water tubs. (for tie-out pens) Start using these at home so they're comfortable eating and drinking out of whatever you're bringing to the show. Communal water tubs = gross. Don't share germs. Get a water filter (RV Section at Walmart) to filter out chlorine and other things. Some people even start flavoring water at home to be able to add that flavor at the show.
- extension cords, 3 way plugs, generator if allowed, fans, brackets, appropriate nuts, washers, bolts, and tools to tighten them. Wire, pliers, hammer...tools. Zip ties. Nylon straps with clips.
- hoses, hose nozzles, wash stuff, blowers & hoses, extra clamps, extra water hose parts
- Poop forks, shovels, metal fork, wheel barrow - all the tools - Mark your stuff. Tape, paint, write your name on everything.
- VET BOX (for kids and calves) - all the basics, Band-Aids, Neosporin, Tylenol, bug bite stuff, thera bloat, electrolytes, THERMOMETER, drench gun, any medications you may need for calves
- PAPERWORK - copy of entry forms, registration papers, health papers, brand papers, show schedule/book, notebook, pens
- Daily care - sheen, combs, brushes, FLY SPRAY, Extra rope halters, NECK TIES
- Show day - PROPERLY FITTING halters, show sticks, harnesses, show attire, Glue, paint, powderful, oil - don't just bank on the old stuff you've drug around for years and have let freeze and get hot. Color match your colored cattle, Breakdown product, good conditioner
- Cooler with drinks, snack box
- Chairs

Where to Go:

- You may unload where you would like and lead your animal over to the Beef Barn. Unless otherwise specified, all beef events happen in the Multi-Plex.

When You Need to be There:

- Unload - by 11:00 am on Tuesday
- Meeting - 12:00 pm on Tuesday
- Weigh In - 1:00 pm on Tuesday
- Heifer Judging - 3:00 pm on Wednesday
- Beef Show - 9:00 am on Thursday
- If you are selling a steer or heifer in the Junior Livestock Sale, then a consignment form must be filled out and turned into the fair office by Thursday at 3 pm.
- Beef Bills of Sale are due in the Fair Office by Friday @ 11 am



STATIC INTERVIEW JUDGING

What to Expect & Responsibilities:

- HOW IT WORKS: All 4-H projects that are not live animals get judged on Sunday in the Exhibit Hall from 9-11 AM in four steps:
 1. Check-In: At the check-in table to pick up your pink entry cards. Attach the correct pink entry card to each corresponding project using tape, string, or a stapler.
 2. Judging: Judges are arranged around the room by the project. Some judges will judge several projects; read the signs behind them. If you have multiple projects, pick the judge who is free first. There is no schedule; judges will take first-come-first-serve.
 3. Check-Out: Once your project has been judged, a ribbon color will be attached to it. Bring your project and ribbon to the check-out table where they will record the result. If the project qualified for the state fair you must sign the state fair book stating whether you want Emily to take it to WSF or if you will yourself. Remember to fill out and attach a Static Skills Card!
 4. Club Booth: Finally, place your project in your 4-H Club booth. When your club decorates their booth, they will arrange the projects for display.
- If your project qualifies with a purple ribbon for State Fair, **fill out a static exhibit cards and attach it securely.**
- Please be considerate of the other 4-Hers who still need to get in to see their judges as you are getting your projects judged. There are many of you and only one judge for your project; be patient!
- AFTER FAIR: Static Projects can be picked up on Friday after 1 PM. If Emily is taking it to State Fair for you, please leave it in the Exhibit Hall. Regardless of whether your project is going to State Fair or not, your *ribbons* need to be picked up from the Exhibit Hall Friday afternoon after 1 PM. **Any ribbons not picked up will be thrown away.**

What to Bring:

- Skill Cards printed at home and filled out prior to arrival.
- Your projects ready to display.
- Your best attitude and knowledge about your projects!

Where to Go:

- You will enter the Exhibit Hall through the double doors on the North side of the building.

When You Need to be There:

- 4-H Static Judging will happen from 9 am - 11 am on Sunday, July 30th. Please be considerate of our judges and don't show up at 10:50 am with five different projects for your interviews!

Example questions judges may ask during an interview:

Tell me about your project! ←.....



What was the most difficult
part of your project?

What did you learn from
doing this project?



Did anyone help you with this
project? If so, what did they
do?

What would you do
differently next time?



What was your favorite part
of this project?

Why did you choose to make
this project?



What tools did you use?

Static Exhibit Ribbons—Explained



The 4-H recognition model is based on awarding youth in 5 different areas: participation, progress toward self-set goals, achievement of standards of excellence, peer competition, and cooperation. Fair is an opportunity for 4-Hers to earn recognition in two of those ways: colored ribbons that compare your projects to standards of excellence, and rosettes that compare your projects to your peers projects.

Colored Ribbons: The Danish System

After examining the exhibit and interviewing you about your project, the judge will award your project a colored ribbon based on its' quality compared to a perfect standard. How does your exhibit stack up to the standard of excellence for that project?



Excellent—these projects set the standard of excellence or come very close, they will represent our county at State Fair



Very Good—these projects fall just shy of achieving that standard of excellence, a little more work needed to be put in



Good to Fair—these projects are on their way to meeting that standard of excellence but have some work to go



Needs Improvement—these projects will require a lot more learning and work to bring them up to a standard of excellence

4-H STATIC ENTRY CARD

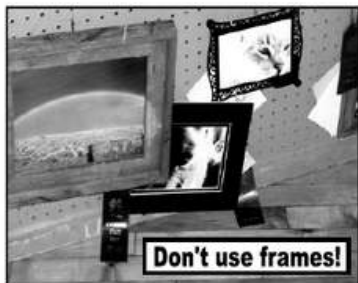
 FILL OUT THIS CARD AND ATTACH IT TO YOUR PROJECT IF YOU CANNOT BE THERE FOR INTERVIEW JUDGING

 THIS IS THE SAME CARD THAT YOU WILL FILL OUT IF YOUR PROJECT QUALIFIES FOR STATE FAIR

Name:	County: CARBON
Project:	
<p>How did you get the idea for your project and what do you like best about it?</p>	
<p>What tools did you use and what skills did you use or learn in making your project?</p>	

BAD TECHNIQUES!

STATE FAIR PICTURES



MAT FRAME or BOARD

Securely attach the photo or drawing to the mat frame or mat board.

Mat Board is a solid piece of thick layered paper pressed into a hard board, they come in many colors and sizes. Mat Frame is the same board with the middle section removed, creating a boarder around the photo or drawing.

PLEASE USE THE FOLLOWING CHART TO SELECT THE SIZE OF YOUR MAT FRAMES:

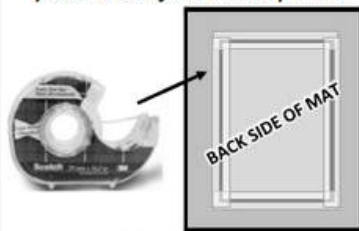
IMAGE SIZE	MAT SIZE
5" x 7"	8" x 10"
8" x 10"	11" x 14"
11" x 14"	16" x 20"

DO NOT USE...

Frames— wooden, plastic, metal or any with stands on the backside of the frame. They are heavy and hard to hang. When they fall, they take out all the pictures below them. You are being judged on the "photo" not on it's mounted presentation.

DO NOT USE...

The following types of tape to hold the strings on the back of your pictures! Masking tape, duct tape, strapping tape, packaging tape, double-sided tape or blue painters tape. They all weaken due to the humidity and heat of the summer days.
****Suggested Use: Strong, clear, Scotch Tape completely securing the parameter of the whole photo!**



DO NOT USE...

Weak thin string, yarn, embroidery floss, fishing line, pipe cleaners, coat hangers, ribbon, press-in hooks, or kite string.
****Suggested Use: Strong thick string or framing wire!**

YOUR PHOTOS AND DRAWINGS ARE BEING JUDGED, NOT THE METHOD OF DISPLAY!

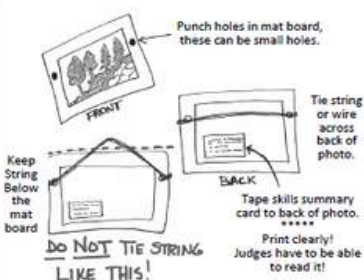
While a nice frame adds character to your photo or drawing, your entry is only being judged on the picture alone. Save your frame until you get the entry home and then use it!

HANGING METHODS:

You can punch holes in the corner of the Mat Board and thread thick strong string or wire through the holes to create a hanger or punch a hole in the center of the frame with a hole big enough for a peg board hook. (hole at least .365")



NOTE: PEG BOARD HOOKS ARE USED AT COUNTY AND STATE FAIR! Keep that in mind when putting hangers on your pictures.



PHOTOGRAPHY & VISUAL ARTS



PREFERRED METHODS FOR DISPLAYING PHOTOS AND DRAWINGS AT FAIR

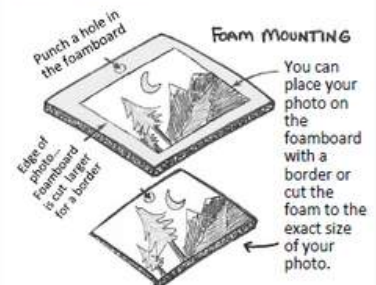
ADDITIONAL HANGING METHODS:

You can also use solid Mat Board or Foamboard to mount your photos or drawings. Make sure your photos or drawings are affixed to the mounting board properly!

DO NOT USE DOUBLE SIDED TAPE!!!
 (The heat of the summer causes it to fail!)

***** Suggestion: Please use double sided FOAM TAPE!**

It has very strong adhesive and can be purchased at your local craft stores or hardware stores.



Optional: You can buy Hang Tabs online at Uline, Ebay or Amazon, etc.

Suggested size:
 7/8" X 1.25"



Carbon County 4-H Fair Guide 2023

Issued in furtherance of extension work, acts of May 8 and June 30, 1914, in cooperation with the U.S. Department of Agriculture. Bret Hess, interim dean and director, College of Agriculture and Natural Resources, University of Wyoming Extension, University of Wyoming, Laramie, Wyoming 82071.

The University is committed to equal opportunity for all persons in all facets of the University's operations. All qualified applicants for employment and educational programs, benefits, and services will be considered without regard to race, color, religion, sex, national origin, disability or protected veteran status or any other characteristic protected by law and University policy.

Carbon County Extension
PO Box 280
215 W. Buffalo St., RM
329
Rawlins, Wyoming 82301

Contact Us!!

Carbon County Extension: 4-H

PO BOX 280

215 W. Buffalo St.

RM 329

Rawlins, Wyoming 82301

(307) 328-2642

ehaver@uwyo.edu

Visit us on the web at:

<https://wyoextension.org/carboncounty/4h-youth-development/>

Facebook:

Carbon County 4-H