

## Administrative News from Glen:

I hope that you had a relaxing and enjoyable holiday. I am still contemplating a most appropriate New Year's resolution so I have nothing yet to share there. I promised a continued discussion of the "Seven Strategies for a Successful 21st Century Extension Service" list. The next strategies up are Impactful Learning Experiences and Expand Open Source Learning.

### Impactful Learning Experiences -

The idea of impactful learning experiences is not new. The fundamental program-planning model of the Extension system, the Logic Model, is all about planning programs for impact. Our federal partners require documentation of impact to justify the use of federal funds. Impactful programming has always been critical to Extension's success. It isn't new but it belongs front and center for the next century as well. And I would argue, impactful learning experiences will become increasingly important to Extension's success as we compete with a greater variety of others for the learner's interest and attention. Impactful learning experiences will be particularly critical as we develop new learning products using digital media approaches. Our learning products will have to be interactive at some level and engaging. A talking-head video presentation would not pass an impactful learning experiences standard in most cases; nor would a "read this and fill in the worksheet" approach. I believe that it will be critical as we continue our development of digital learning products that they be built on learning experiences that significantly impact the learner.

### Expand Open Source Learning –

A fundamental underpinning of our national Extension system has been public open source education; extension education has generally been free or nearly so; further, extension education materials have been freely traded and adapted by extension, industry, agency, and other folks to fit alternate communities, ecosystems, states, etc. without any thought other than a loose acknowledgement of the origin or basis of the materials in question. In my observation the most impactful aspect of internet connectivity has been opening the availability of all kinds of content offered at no cost to anyone with the requisite device and connection. Everything from music to car repair how-to's, to cooking, to makeovers is available open source and has made other approaches/business models obsolete. Wikipedia is of course a classic example. Why would anyone want a printed encyclopedia when the information is dated before it makes the printer and the alternative is revised daily? I am still amazed at a music industry that builds public acceptance, recognition and stardom by making the music free on-line and producing CDs, a salable media product, as an afterthought. One last example; just humor me: I have been working on motorcycles, cars and bikes since childhood but today, I wouldn't consider anything but routine maintenance without first viewing the how-to video on-line. I believe open source will have a growing role in 21st century lifestyles. Building on the legacy of open source will be a critical to the success of a 21st century extension service.

Just my thoughts, Glen

---

## Personnel News:

**Extension Specialist and Regional Extension Program Coordinator for the USDA Northern Plains Regional Climate Hub – Position #5044, based on campus in Laramie or USDA ARS Rangeland Resources Research Unit in Cheyenne. This is a non-extended term track, Assistant, Associate, or Senior UEE position. Interviews will be held in early February.**

**Campbell County, CDE** – Position #0464, based in Gillette. This is an extended term track, Assistant UEE position. The position closed January 2<sup>nd</sup> and screening is underway.

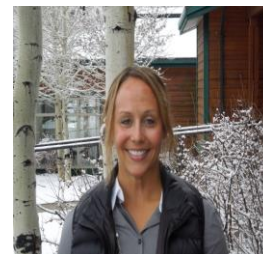
**Johnson County, 4-H/Youth Development Educator** – Position #4032, based in Buffalo. This is a non-extended term position. Screening will begin January 9, 2015.

**Carbon County, NFS** – Position #1281, based in Rawlins. This is an extended term track, Assistant UEE position. Screening will begin January 12, 2015.



Jeremiah Vardiman joined the Park County Extension staff January 5<sup>th</sup> as the Area Extension Educator for Agriculture, with emphasis in crop science. Vardiman has a Masters in Arts of Education with emphasis in Science and a B.S. in Biology with emphasis in Environmental Studies, both degrees from Chadron State College in Chadron, Nebraska. In addition to agriculture producers, this position will provide educational programming to small acreage land owners, and support to area Master Gardener programs. Jeremiah has worked for UW since 2012 at the Sheridan Research and Extension Center, and for the past year served as Assistant Farm Manager.

Jordan McCoy began January 2<sup>nd</sup> as the West Area, University Extension Educator for Nutrition and Food Safety; the position is based in Teton County. McCoy, who grew up in northern Wyoming received a BS degree in Exercise and Sports Science from University of Wyoming in 2002. She received a M.S. degree in Kinesiology with emphasis in Coaching in 2004 from Georgia Southern University in Statesboro, Georgia. Jordan graduated with a second B.S. degree in Dietetics from Kansas State University in December 2010. She completed a Dietetic Internship at Idaho State University in 2012. She is a registered and licensed dietitian. She has been working as a Pediatric Dietitian at the Cystic Fibrosis Center in Albuquerque, New Mexico and also serves as an Adjunct Professor in Nutrition for the University of New Mexico.



Kenzie Krinkee started with the Teton County Extension Team as the 4-H Youth Educator January 5, 2015. Kenzie received a B.S. in Equine Science with a minor in Business Administration from Colorado State University May 2014. She recently completed a 4-H internship during the summer of 2014 with the Adams County Colorado Extension Service. A 10 year 4-H alumni, Kenzie first became involved with 4-H in Bozeman, Montana when she was eight years old taking Western Horse and Family and Consumer Science projects. She was active in the CSU Rodeo team, and managed volunteers to run the CSU Skyline Stampede Rodeo.

---

## Staff Development/Federal Relations News from Susan:

### **Professional Development News**

In 2015 Extension will hold EPIC (Extension Professional Improvement Conference). This bi-annual training is not subject matter specific, but will include topics applicable to all, regardless of the discipline you provide education in. This conference rotates out in the state; sites in NW Wyoming are being reviewed. Tentatively please hold the week of November 9 – 13, 2015.

County Coordinators: The Administrative Team (Associate Directors and UWE Director) will conduct training on budget development and management with a Webinar Wednesday, January 21, 2015. Please reserve the afternoon from 1:30 – 3:00 p.m. The Webinar will run approximately 1 ½ hours in length.

### **Civil Rights Tip**

Six counties go through civil rights training reviews each year. The counties up for review in 2015

include: Big Horn, Converse, Goshen, Sublette, Sweetwater, and Weston. You will be contacted in February regarding scheduling the county review.

### **Reporting Tip**

When completing Extension on-line reports the program defaults to your base county or in the case of state specialists – state. Location is always the location of benefit. Area educators should report the area or county you are working in to document area work. For most 4-H youth educators, the location won't change unless you are teaching in another county or at a state event. When teaching outside your home base, please remember to change the location to the appropriate county.

### **Customer Service Tip**

As we start the New Year, here are just a couple of simple tips which lead to great customer service. Are your customers greeted when they walk in the door or at least within 30-40 seconds upon entering? Is it possible they could come in, look around, and go out without ever having their presence acknowledged?

Do you know who your customers are? If a regular customer came in to your office, would you recognize them? Could you call them by name? All of us like to feel important; calling someone by name is a simple way to do it and lets them know you value them as customers.

---

## **Cent\$ible Nutrition Program News from Mindy Meuli:**

The Cent\$ible Nutrition Program wants to welcome **Kali McCrackin** to our team. Kali is the new **Marketing Coordinator**. Her first day was January 5th. Prior to joining the CNP team, Kali was the Social Media Coordinator for Wyoming EPSCoR. She has been teaching English in South Korea the past year and recently returned to Laramie. Kali is a UW graduate with a BA in Journalism and International Studies.