

The Clover Connection

July 2026 Newsletter

In This Issue

- Hello From Hannah.....Pg. 1
- Important Dates.....Pg. 2
- July Birthdays.....Pg. 3
- Ultrasound Clinic.....Pg. 4
- Rabbit Clinic.....Pg. 5
- Carcass Contest.....Pg. 6
- Presentations Contest.....Pg. 7
- Buyers Tickets.....Pg. 8
- Local Items.....Pg. 9
- Platte County Fair.....Pg.10
- Contact Resource.....Pg. 11
- Project Success Tips.....Pg. 12
- Fair Superintendents.....Pg. 13
- Fair to Fork Program.....Pg. 14
- Z Suite Enrollment.....Pg. 15

July Feature



Jackie Bauder
Selected as the 2026 Wyoming 4-H Volunteer of the Year! Way to go Jackie, you are so deserving!

Kreed Kuntz
Competed in Grand Island Nebraska at National State Shoot in Shotgun. We are so proud of you!





Hello from Hannah



Happy 250th Birthday America the beautiful red, white & blue!

Reminders

Z suite project add/drop date is July 10th.

Ultrasound Clinic July 6th at about 2:30 pm.

Cloverbuds is July 16th at 4 pm in the Extensions Office.

Rabbit Clinic July 8th at 6pm Exhibit Hall.

Presentations Contest July 21st at 1pm Extension Office.

Ultrasound Carcass Contest July 20th 8 am.

Platte County Fair July 24-2nd.

Platte County Dog Show July 18th all day.

Updates

Platte County Fair 2026 entries will open June 1st and will close July 10th. No late entries will be accepted.

I cannot believe it is already July with fair kicking off in three weeks! I know you all have been working so hard this year with your projects and I am stoked to see them. Remember that as fairs come and go the friendships, memories and lessons learned, you will carry with you forever. Here's to our first fair together~let's make it the best one yet!

~*Hannah*



July



6

Ultrasound Clinic 2:30 pm start in extension office

6

Broken Trail 4-H Club Meeting 4 pm Extension Office

7

Sybill Livestock Club Meeting 6pm Agriplex

8

Rabbit Clinic Exhibit Hall 6 pm

16

Cloverbuds Meeting 4 pm Extension Office

18

PC Fair Dog Show All Day

20

Carcass Contest 8am Fairgrounds!

21

Presentations Contest 1 pm Extension Office

9-12

State Shoot



24-2

Platte County Fair



2



Happy Birthday



JULY Birthdays

Tra Bauder
Everly Shirk
Beth Douglas
Cooper Kennedy
Henley Shepard
Dane & Luke Goertz
Madison Crowley
Elijah King
Carly & Coy Robertson
Paige Weaver
Julia Ebel
Amber Tracy
Abbigail Alexander
McAuley, Greyson & Rio Wright

Kaison Thomas
Paizley Lovett
Corra Bartow
Erin Morris
Corbin Burr
Abigail Seyfang
Elias Pitroff
Tuff Thayer
Gracie White
Hayden Steinsiek
Blake Gardner
Carter Jackson
Jackson Pierce



HAPPY BIRTHDAY

Ultrasound Carcass Clinic

PLATTE COUNTY



4-H

CARCASS ULTRASOUND CLINIC



July 6th



**TENTATIVELY STARTING
2:30 PM**

in the Extension Office
Conference Room



**THEN WE'LL TRANSITION TO
TYLER LAUCK'S FEEDLOT**
to evaluate cattle live.



Hands-on learning using
ultrasound technology
in a real-world setting!

Clinic taught by

ERIC GEVING



Eric brings years of knowledge and
industry experience to help 4-H members
understand how ultrasound data
impacts beef quality and value.



Learn the **IMPORTANCE** *of*
PRODUCING A PRODUCT
THAT WILL ENTER THE FOOD INDUSTRY.

Brought to you by
BROOK BROCKMAN
and Platte County 4-H

RSVP
307-331-5607

Open to all Platte County 4-H members
Bring your questions, your curiosity,
and a willingness to learn!



Rabbit Clinic



PLATTE COUNTY 4-H

Rabbit CLINIC



BRING
YOUR OWN
RABBIT!

Get Ready for Fair!



Join us for a hands-on clinic designed to help 4-H members prepare for the Platte County Fair.

Learn from clinician

⇒ *Jessica Taliaferro* ⇒

and gain valuable skills to help you and your rabbit succeed in the show ring!



JULY 8, 2026



6:00 PM



EXHIBIT HALL

TOPICS INCLUDE:

- 🌿 Showmanship Skills
- 🌿 Proper Rabbit Handling
- 🌿 Grooming & Presentation
- 🌿 Fair Readiness Tips
- 🌿 Questions & Answers

PLEASE BRING:

- 🐰 Your own rabbit
- ❓ Questions you would like answered
- 🌿 A readiness to work with your rabbit
- 📄 A carpet square if you have one



Learn it.



Practice it.

♥ Learn by Doing



Show it! ♥



RSVP TODAY!
hcesar@uwo.edu

ALL PLATTE COUNTY
4-H RABBIT MEMBERS
ARE ENCOURAGED TO ATTEND!

HOSTED BY PLATTE COUNTY 4-H 🌿



Carcass Contest

CARCASS Ultrasound CONTEST

Buckles

Beef - Daly Ranch

Swine- AVMC

Sheep- Daryl & Marsha

Tiltrum

Goat- Don Cox Memorial

Banners

The Bauder
Family

Cash Prizes

First State Bank

Date:

July 20, 2026

Start Time:

8:00 am

Platte County Fair
Grounds

SPONSORED BY:

Water Wheel Farm

Presentations Contest



Presentations Contest

At the Platte County Fair

Presentations can be on anything you are interested in. They can be a demonstration, illustrated talk, skit, interactive exhibits, drama, food show-off presentation, multi media presentation, etc.

Juniors

3-7 minutes

Intermediate

5-10 minutes

Senior

7-15 minutes

Division 301 on ShoWorks

Please let hcesar@uwyo.edu
if you are planning on
competing in this!

Will be Judged in the Extension
Conference Room on July 21 at 1pm
by Commissioners.



Livestock Sale at Fair

BUYERS TICKETS



AVAILABLE TO PICK UP

JULY 1, 2026

EXTENSION OFFICE



CLOVERBUDS



WE ARE BUILDING EAGLE HABITATS TO ENTER INTO FAIR!

INFO	JULY 16	
	4 PM	CONFERENCE ROOM

Do you want to turn your 4-H skills into a business?

The Platte County 4-H Leadership Team is offering startup grants to help get your business up and running!

Please contact Dixie Mount 307-322-4075

Or Sydney Burek 303-217-3794

To schedule a time to meet with the Team to pitch your business plan!

GROW WITH 4-H

Graphic credit: Serena, New Castle County 4-H Newsletter



2026 Platte County Fair

Reminders:

Entries Open: June 1st

Entries Close: July 10th

NO LATE ENTRIES!



Theme

America's 250th birthday is the theme for this year! Show your American pride in all that you do! Cloverbuds will get two American themed entry slots this year. Let's get patriotic 4-H'ers!

Entries:

Must be done through ShoWorks. Attend the clinic above to learn how to enter for fair this year.

2026 Fair Changes

Dog Show- July 18th
No horns allowed for market goats.
Scurs under 2 inches will be accepted.

Questions?

Call Jenny the fair manager at 307-322-7101.

OR:

Contact a fairboard member.



See you there!



Who To Contact Resource

FFA Advisors & 4-H Educator also work with one another along with superintendents.

The Fair Manager and 4-H Educator work closely together to support Platte County Youth in general.

Platte County Fair Organizational Chart

FFA

In school youth organization with 4 Chapters in Platte County.

Please contact advisors in Wheatland (2) Chugwater, or Glendo.

Work closely with the 4-H educator around weigh in's, county fair and state fair.

Work alongside Platte County superintendents and help with fair needs for youth.

Bill Dalles- Wheatland
Kevin Teten-Glendo
Lisa McCarty-Chugwater

Jr. Livestock Sale Committee

Made up of a board of 3 members and 6 livestock superintendents

Make decisions about anything that has to do with the Jr. Livestock Sale.

Also assist with other areas of fair if asked to and related to their mission.

Contact Greg Meyer- President
Beth Douglas or Danette Eppel

4-H

Educator- Hannah Cesar, housed in the extension office.

Oversees all 4-H youth and 4-H Leaders/Volunteers

Provides programming and opportunities to Platte County Youth in 4-H.

Works alongside all four entities to ensure youth success and positive development.

Employed by Platte County & The University of Wyoming. UW is direct supervisor.

Assists at fair for all youth shows and wherever needed for youth success.

Maintenance Dept.

Jim Dewitt- head of maintenance dept. Oversees 5 full time employees. Seasonal employees in the summer.

Maintains fairgrounds, arenas, and buildings maintenance on fairgrounds.

Provides maintenance on all other county buildings such as library, courthouse, jail, etc.

Blow a breaker at fair? Toilet backed up? Call Jim.

Direct supervisor- County Commissioners.

Fairboard

Board of five members that oversee the fairgrounds, fair, fair manager, and superintendents.

Fair Manager: Jenny Davis. Books all facilities on fairgrounds, prepares for fair, manages superintendents, fair Facebook and website.

Superintendents: Volunteers that dedicate their time to their respective project area at fair.

Any rules/regulations challenge, class questions, etc.- directed to superintendents, then up the chain.

Fairboard- supervised by County Commissioners.
Fair Manager- employed by County Commissioners.

Fairboard Members: Molly Keil, Poston Anderson, Jason Griffin, Gene Daly and Justin Gentle.

Although this chart is a great reference point of who to ask, please feel free to ask anyone as most individuals involved will know what direction to point you to. We ask that you do not get frustrated with us as a lot of areas do overlap to make Platte County Fair as great as it is!

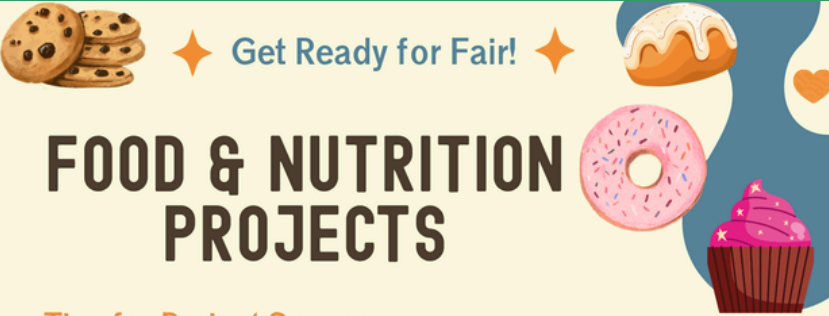


THANK YOU TO OUR COMMISSIONERS FOR BEING SUPPORTERS OF 4-H/FFA AND FAIR!



Project Success Tips

Brought to you by: Tricia Sagner



◆ Get Ready for Fair! ◆

FOOD & NUTRITION PROJECTS

Tips for Project Success:

- Bake and practice your skills throughout the year, you want items uniform in size and color. When you have a baked item that is perfect for fair, freeze it for up to 6 weeks and set out to thaw the night before judging.
- First year bakers should consider baking cookies, brownies, and quick breads like banana bread, muffins, or biscuits.
- Second year bakers can build on the previous year. What tips did the judge give you last year? You can continue to try new varieties of cookies (drop cookies, shaped cookies, not bake cookies), brownies, and quick breads.
- Members who have participated for 3 or more years should consider coffee cakes or single layer unfrosted cakes- chocolate, white, or yellow.
- Intermediate & Senior 4-Hers who have been baking longer can try angel food cake, yeast breads, and foreign-food items like croissants.
- Food Preservation-canning items be sure to follow the instructions from canning books like Ball Canning to have the correct fill as well as cook temperature. The Extension Office has these resources.
- Practice baking throughout the year. The more baking experience you have, the more complex your foods item should be.
- Foods must be shelf stable and not need refrigeration. No pies, cakes must be unfrosted, no butter or cream cheese frosting.



DISPLAY/ PLATING

Food Items for Judging

- Place food items on an appropriately sized, sturdy paper or plastic plate and in a zip lock bag or covered with plastic wrap
- Cookies, brownies, muffins, biscuits, etc. display 3 uniform items
- Cake and bread loaves, bring $\frac{1}{4}$ of the item cut from the end if in a square/loaf pan.
- Include with all baked items the full recipe and a statement of what you learned.
- For interview judging, dress nice, clean clothes, no shorts or casual t shirts.
- If your food items qualify for state fair following county fair, you will need to bring another plate of the item. This can be from extras you have in the freezer, or you can make the items fresh again.



FAIR SUPERINTENDENTS

CAT: SAM FREEDBURG- NOT PICTURED



BEEF: STEVE PAISLEY



SHEEP: GREG MEYER



SWINE: BLAINE EPPEL



POULTRY: CHRISTEENA WHITE



DOG: CLAIRE KLATT



RABBIT: CHARITY CAVES



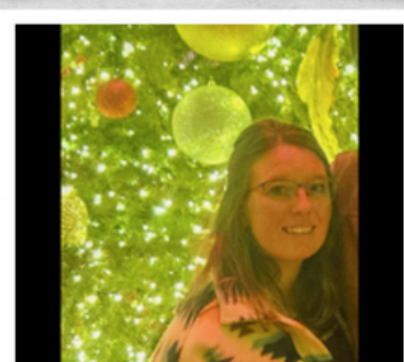
FOODS: TRICIA SAGNER



ROUND ROBIN: MATTHEW JOHNSON



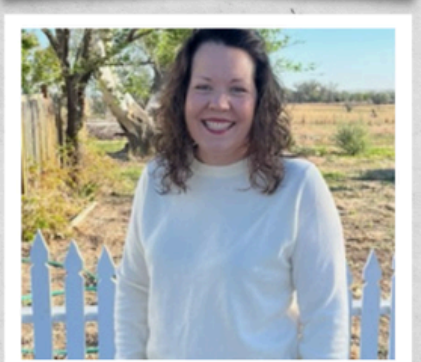
HORSE: BROOK BROCKMAN



GOAT & FASHION: ASHLEY JOHNSON

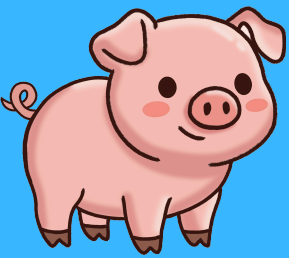


SUPREME COW: NICOLE SAGNER



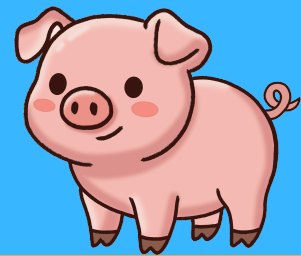
GENERAL EXHIBITS: DIXIE MOUNT

Thank You for all that you do!



Fair to Fork Program

“Feeding Wyoming one hog at a time”



Join us in going **whole hog** in the fight against food insecurity in Wyoming!



83,000 of our neighbors struggle with food insecurity. *Fair to Fork* is making a difference.

Sources of high-quality protein are notoriously expensive and difficult to procure for local food pantries, but we can help. Through a lottery selection, Wyoming Hunger Initiative’s *Fair to Fork* program will purchase one hog not sold at junior livestock sales, from every county in Wyoming.

Visit with your local 4-H educator or FFA advisor to learn more!

Join us. It’s as easy as 1-2-3!

- 1 Sign up for the lottery through your local University of Wyoming Extension Office or scan the QR code.
- 2 If you are selected, your hog will be purchased for \$750. It will then be processed (at no cost to you) by a participating USDA or state-licensed facility, then donated to a local anti-hunger organization of your choice in your community.
- 3 Come to the Wyoming State Fair to be recognized by Governor Mark Gordon and First Lady Jennie Gordon!



Scan to complete the form indicating your interest



5001 Central Avenue
Cheyenne, WY 82009
(307) 777-7398

nohungerwyo.org

Enrollment Information



ZSuite 4-H Enrollment



New Family Profile

If you've never signed in to ZSuite before, follow these steps:

1. Go to <https://4h.zsuite.org/>
2. As a Family creating a new Profile, select **SIGN UP**
 - a. Fill in all of the fields, select **LET'S GO!**

Adding 4-H Members

You are now on the Dashboard tab

- 1 Select **+ Household Member**
- 2 Fill out 4-H Member's info, select **Continue**
- 3 Fill out PERSONAL INFO, select **Next**
- 4 Fill out all six drop down WAIVERS, then select **Next**
- 5 Dropdown to your CLUB, select **Add Club**

a. Select **Add Project**

i. If you are interested in

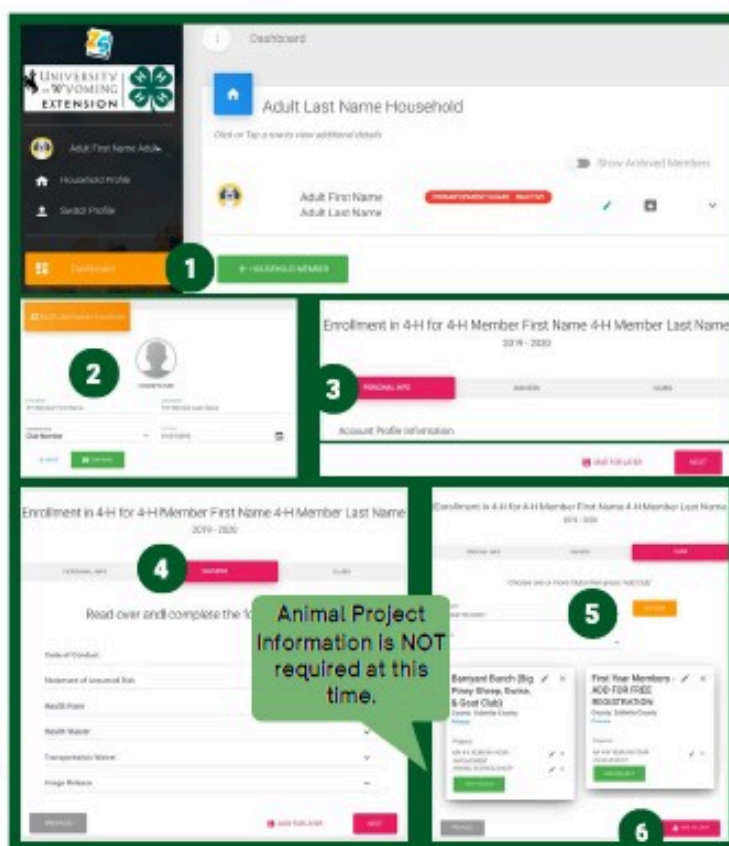
1. Junior Leaders
2. Livestock Judging Team
3. Livestock Skillathon Team

make sure to add them as a Club.

i. ALL 4-H Members should

Add MY 4-H YEAR/MY 4-H YEAR INVOLVEMENT as a Project in one Club, Select **Add Project**

- 6 Select **Add to Cart** and then you can either **+Add Enrollment** or **Submit**. Must be submitted to be complete.



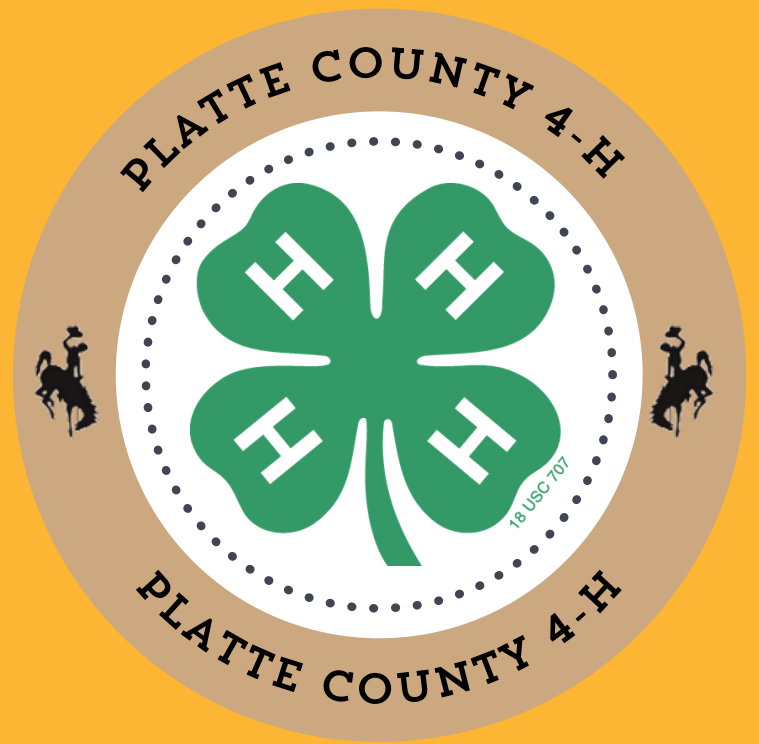
First Year 4-H Members, make sure to add the First Year Member "CLUB". This will waive the Registration Fee.

If you need assistance, don't hesitate to select the ZSuite LIVE CHAT!



Once submitted, your Enrollment will change from Pending Approval to Active when the Extension Office receives payment!

PLATTE COUNTY 4-H EXTENSION



Contact Us Today



<https://wyoextension.org/plattecounty/4h-youth-development/>



307-322-3667



hcesar@uwyo.edu



307-322-4410



57Antelope Gap Rd.
Wheatland WY, 82201



Social Media

Extension Page:

<https://www.facebook.com/plattecountyextensionoffice/>

Platte County 4-H Page

State 4-H Website:

<https://www.uwyo.edu/4-h/>



UNIVERSITY
OF WYOMING
EXTENSION